

How health research supported by NHS Wales benefits the economy

An independent report, commissioned by Health and Care Research Wales (funded by the Welsh Government's Research & Development Division) and produced by KPMG's Economics team, provides an assessment of the economic impact and value generated through health research activity undertaken in NHS Wales over the financial year 2018/19.

The report includes:

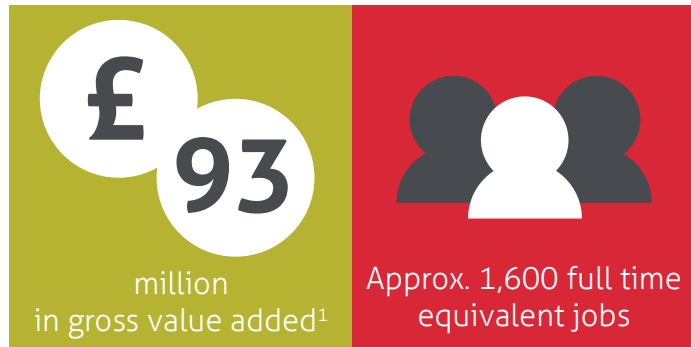
- an assessment of the contribution made to the economy through health research studies supported by NHS Wales;
- an analysis to quantify the monetary value of health research to NHS Wales (specifically the value to the NHS of pharmaceuticals provided and the payments made to NHS organisations for the delivery of commercial studies); and
- an analysis of the wider impacts generated by the Health and Care Research Wales' Support & Delivery Service.

The key findings are explained in this booklet.

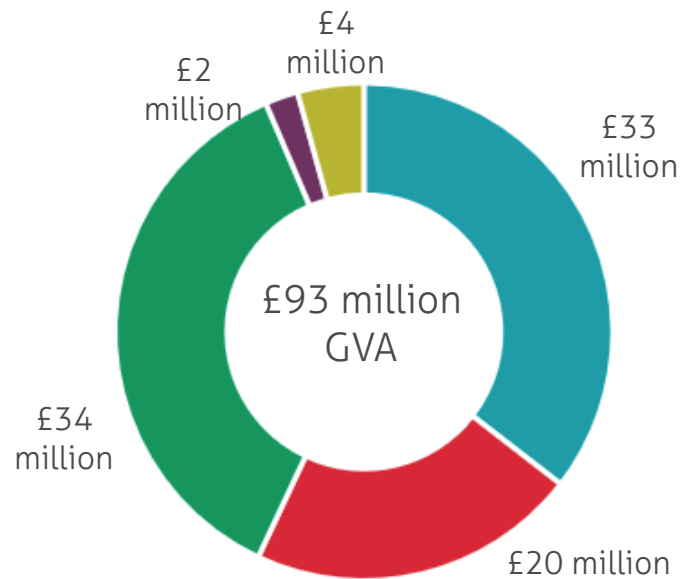


The contribution to the Welsh economy through health research supported by NHS Wales

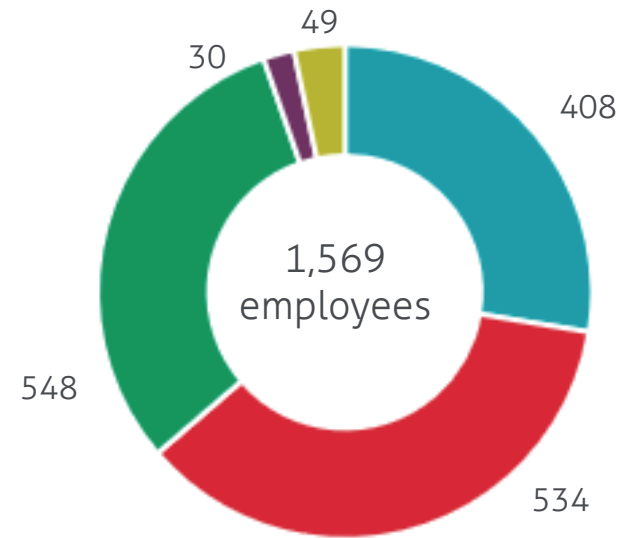
NHS Wales supported health research activity which generated:



Economic impact of NHS organisation supported health research in financial year 2018/19



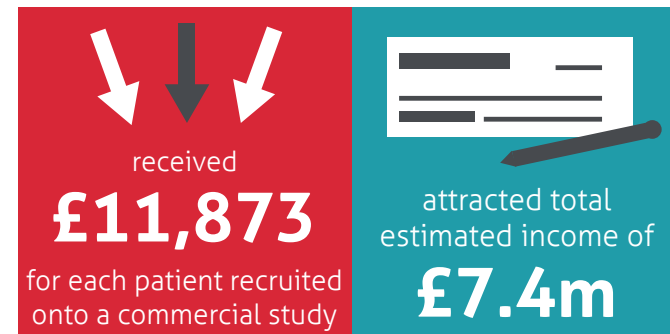
¹ Gross value added measures the contribution to the economy of an individual producer, industry or sector, net of intermediate consumption (for example goods and services that are used in the production process). It is a measure of the economic value of the activity.

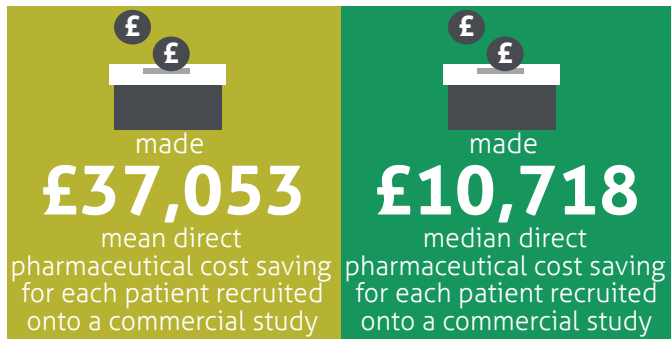


- Non-commercial health research activity: universities & other grant providers
- Non-commercial health research activity: NHS organisations
- Commercial health research activity: sponsor companies & CROs
- Commercial health research activity: NHS organisations
- Support & Delivery (S&D) Centre

The monetary value of health research to NHS Wales

In 2018/19, the NHS in Wales:





£37,053 is the estimated mean direct pharmaceutical cost saving to NHS Wales for **each patient** recruited into a commercial study, where a trial drug replaced the standard of care treatment (occurring in 24% of commercial studies).

These pharmaceutical cost savings, when drugs are provided free of charge, replacing the standard treatments, also occur in non-commercial studies, with this scenario occurring in 6% of non-commercial studies in 2018/19 resulting in a **per patient** saving of £12,412.

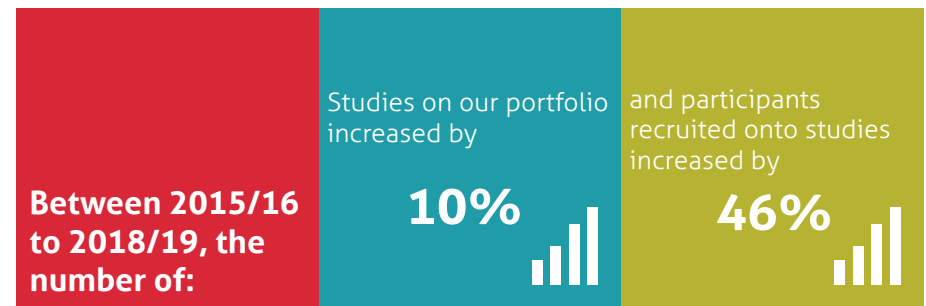


The Support & Delivery (S&D) Service is a Wales-wide service providing a range of support functions to set up, and deliver health and social care research studies across Wales. Its vision is to realise a 'One Wales Seamless Service' for supporting and delivering high quality health and social care research.

The total investment by Research & Development Division, Welsh Government in the **Support & Delivery Service in 2018/19 was £19.82m** which was used to support and deliver NHS research in Wales. In 2018/19 an additional **£7.4 million in estimated income was received by NHS organisations from commercial companies.**

Health research activity in NHS Wales

In 2018/19, there were **746 studies on the portfolio², which recruited 20,755 participants.** This is an increase in both the number of studies and recruits compared to prior years:



Of the studies on the portfolio in 2018/19, approximately 76% were non-commercial, and approximately 96% of total study participants were recruited onto these studies.

²The portfolio is a subset of the Health and Care Research Wales directory, consisting of commercial and non-commercial research. Only 'high-quality' research is included in the portfolio.

The wider impact of Health and Care Research Wales' Support & Delivery (S&D) Service

A series of interviews were undertaken with stakeholders to:

- obtain evidence and insights relating to the specific benefits and value of health and social care research undertaken in Wales;
- identify the role the NHS organisations and the wider S&D Service plays in facilitating such research; and
- discover the routes through which the S&D Service generates wider financial, economic and/ or social value.

The wider impact of Health and Care Research Wales' Support & Delivery Service includes:

- **Support in study delivery which positively impacts on the efficiency, speed and costs** with which organisations are able to deliver studies e.g. through study set-up; staff capacity; management of resources across Wales; and the implementation of a single costing model.
- Offering training to researchers and delivery staff; offering networking opportunities and linking research institutions across the UK; ring-fencing of funding; supporting research approvals and research ethics processes; and Excess Treatment Costs.

The **additionality of the S&D Service's activity** includes that **without the S&D Service**, the nature of the research supported by NHS Wales would be different (i.e. more observational and non-commercial studies), and there would be a **higher risk of duplication of studies** across NHS organisations. **Without the S&D Service**, there would be a **reduction in the research delivery capacity and capability** in Wales, **significantly less health and care research undertaken** and **it would**

be more difficult to scope new research sites, resulting in the same sites being selected for each study.

Without the S&D Service there would be a reduction in the research delivery capacity and capability in Wales, which would have a direct impact on patient recruitment to studies as well as the quality of staff dedicated to research. Based on stakeholder feedback.

Stakeholders also spoke about the impact of the S&D Service's One Wales approach, particularly focussing on the standardised approach for reviewing and agreeing contracts and costings, which makes Wales highly attractive for conducting health research, as the costing of studies is agreed transparently and fairly. The One Wales approach is attractive as it speeds up the contracting processes and is more efficient. Based on industry feedback.

Please see the [full report](#) for details of the analysis.

For more information, contact:
healthandcareresearch@wales.nhs.uk



Ymchwil Iechyd
a Gofal **Cymru**
Health and Care
Research **Wales**



Llywodraeth Cymru
Welsh Government