

Strategic Plan 2015-2020

Jon Bisson
Director



Health and Care Research Wales

- Proposals - Oct to Nov 2013
- External review - Jan to Mar 2014
- Ministerial approval - Apr 2014
- Competitions – Jun to Nov 2014
- Development work and contracts - Jan to Apr 2015
- Branding – Dec 2014 to Apr 2015
- Launch – May 2015



Ymchwil Iechyd
a Gofal **Cymru**
Health and Care
Research **Wales**

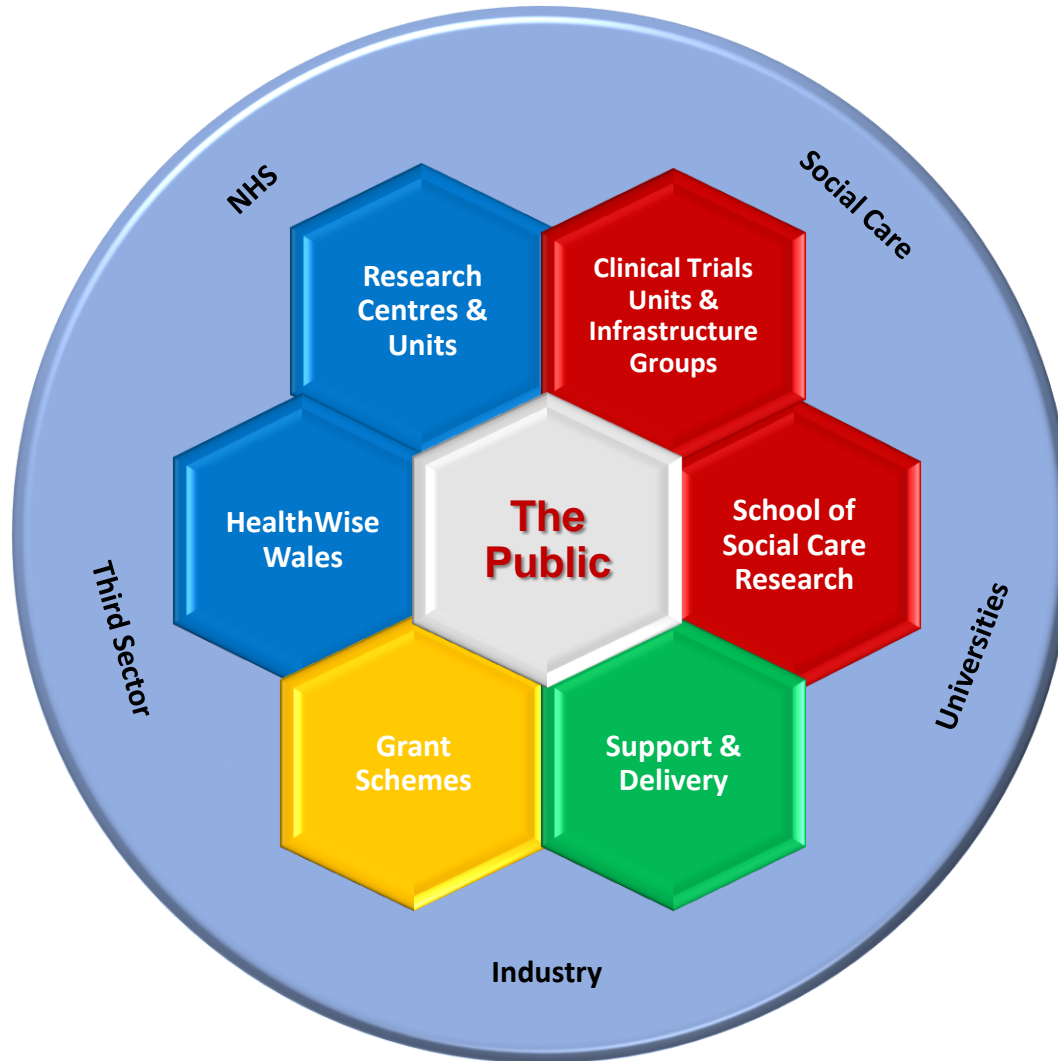
Health and Care Research Wales

- National, multi-faceted virtual organisation comprising several distinct elements of infrastructure and funding schemes
- Funded and overseen by Welsh Government
- Supports translational research with a particular focus on applied and public health research
 - prevention, detection and diagnosis of disease
 - development and evaluation of interventions
 - provision of health and social care services
 - implementation of research findings into practice

Division for Social Care and Health Research (DSCHR)

- Welsh Government Division within the Department for Health and Social Services
- Leads on strategy, policy, commissioning, funding, contract management and governance of health and social care R&D in Wales
- Works closely with policy officials across Welsh Government
 - DHSS
 - EST Life Sciences and Innovation teams
 - Chief Scientific Adviser for Wales
 - Department for Education and Skills
- Works closely with other UK governments, UK research councils, other research funders and the European Commission

Health and Care Research Wales



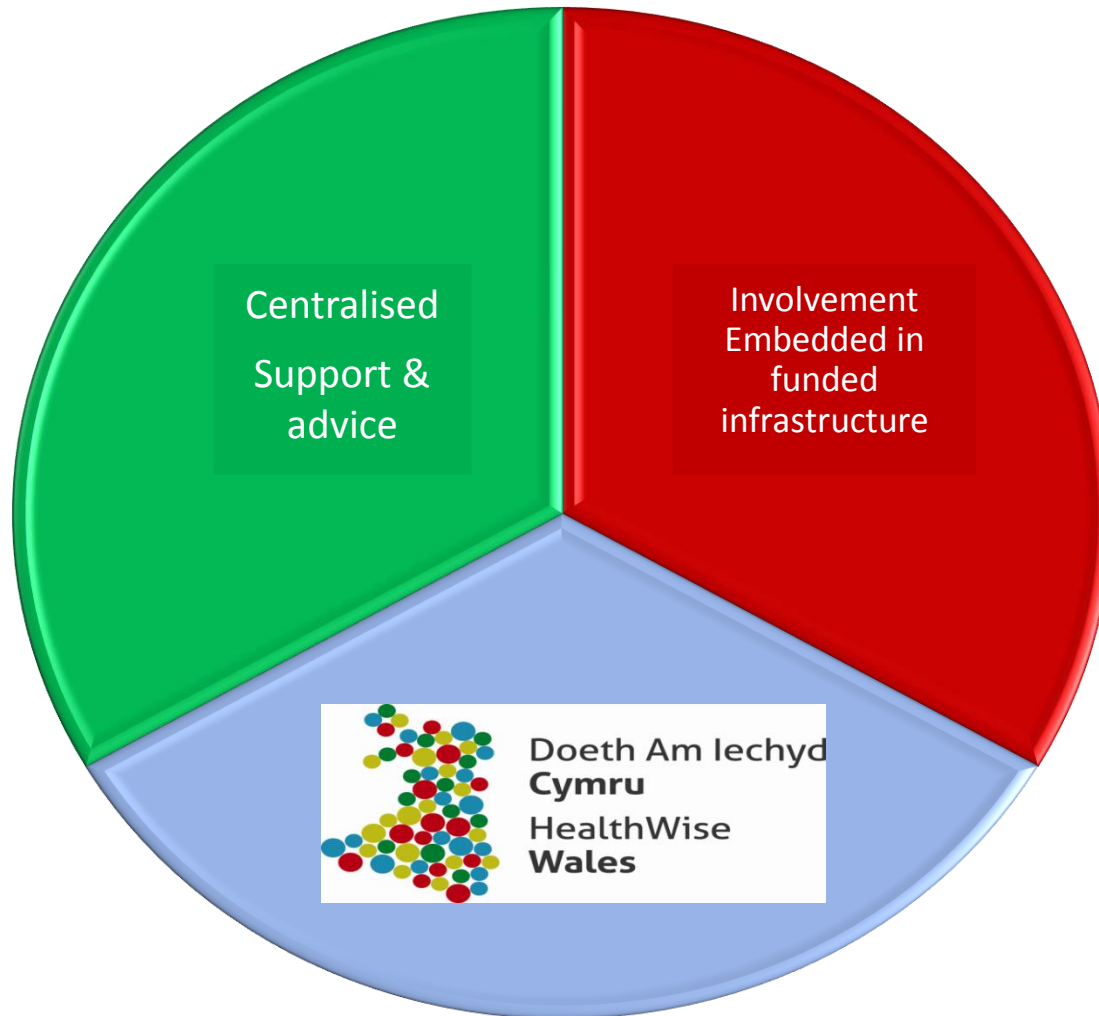
Vision

For Wales to be internationally recognised for its excellent health and social care research that has a positive impact on the health, wellbeing and prosperity of the people in Wales

Strategic Aims

- Ensure public involvement and engagement is central to what we do and visible in all elements of it
- Ensure our work is aligned to Welsh Government policy and has real impact
- Fully integrate our infrastructure and programmes across health and social care
- Invest in areas in which Wales excels and is unique
- Increase capacity in health and social care research in Wales
- Develop systems that ensure excellent delivery and maximise the use of resources

Public Involvement and Engagement



Policy Alignment and Impact

- Welsh Government Policy
 - *Programme for Government*
 - *Together for Health*
 - *Sustainable Social Services: A Framework for Action*
 - *Wellbeing of Future Generations (Wales) Act 2015*
- Key impacts
 - Improve health and wellbeing
 - Improve effectiveness of services
 - Wealth generation
- Themed research calls
- Knowledge transfer and mobilisation

Integration

- To increase research collaboration across sectors
- Multi-professional and multi-disciplinary National Research Centres and Units
- Joined-up working between NHS organisations, the Support Centre, National Workforce and other infrastructure elements



Investing in Excellence

- Centres and Units
 - Ageing and Dementia, Cancer, Mental Health, Population Health and Wellbeing, Primary Care and Emergency Care, Brain, Diabetes, Kidney
- Clinical Trials Units
 - SEWTU, NWORTH, Swansea
- Infrastructure Support Groups
 - SAIL, Wales Gene Park, WHSS



Increasing Capacity

- School of Social Care Research
- Research Capacity Building Collaboration
- Health and Care Research Wales Grant Schemes
 - Research Grant Funding Scheme
 - Fellowship Funding Scheme
 - PhD Studentship Funding Scheme
 - RfPPB
- Strategic partnerships with other research funders
- Grow the number of CIs and PIs
 - Research time competition
 - Specialty leads

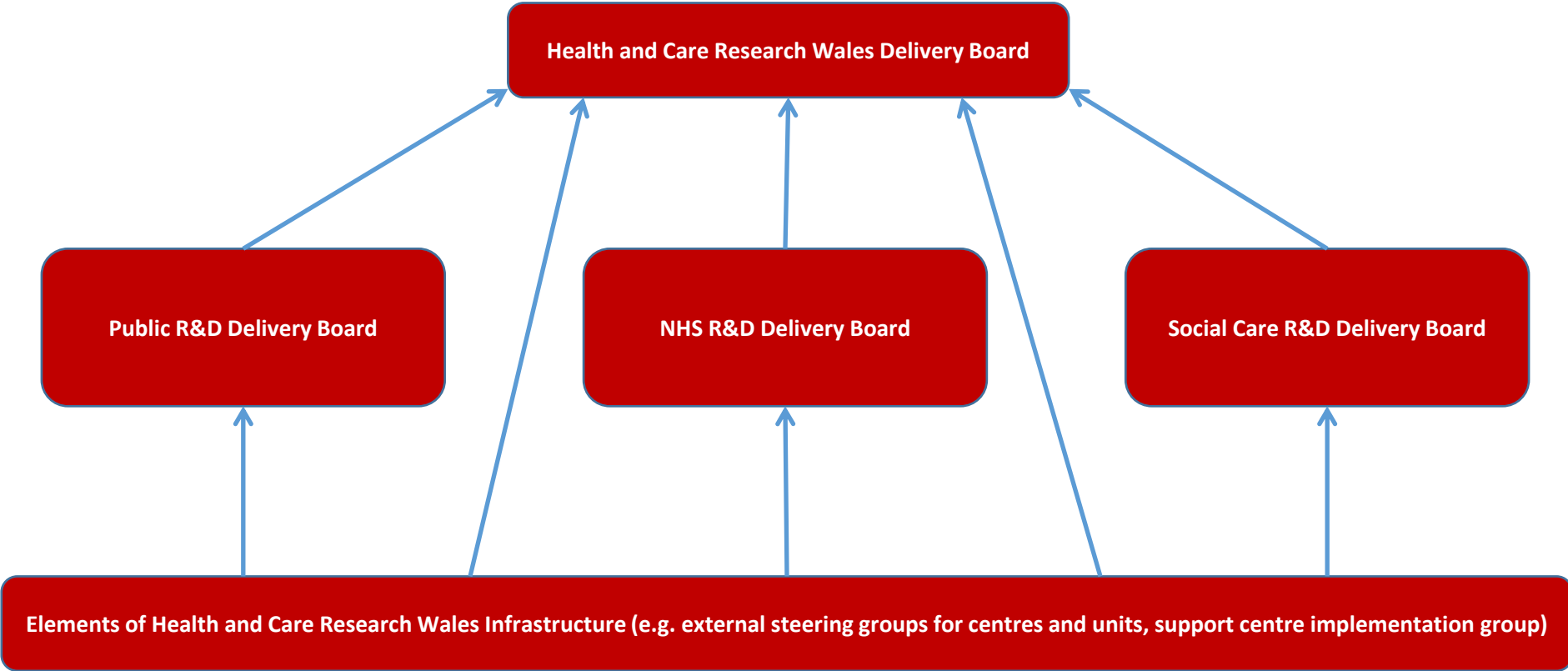


Excellent Delivery

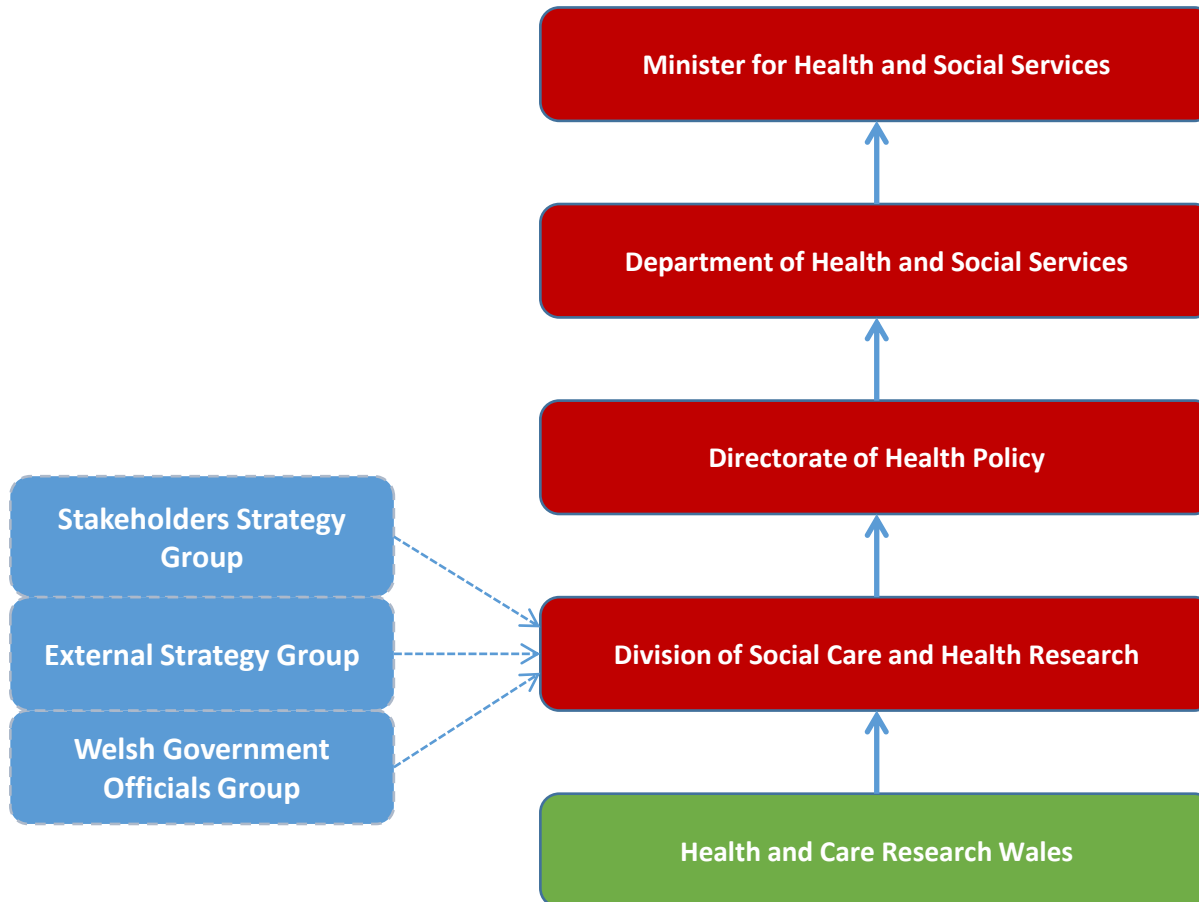
- Focus on supporting research delivery
- Watchwords of excellence, quality improvement and quality assurance
- Strong, effective leadership and governance systems
- Improving research approvals processes

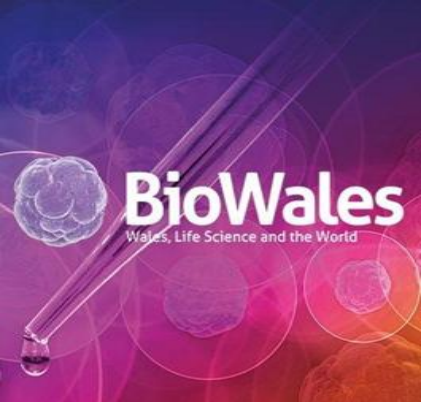


Delivery Management Structure



Governance, Management and Advice





Working with Industry

- Pharmaceutical, diagnostics, devices, IT, other
- Build on success of *Health Research Wales* and embrace social care
- Functions enhanced to support partnership working
- Key role of Centres and Units
- Multiple opportunities to partner with life science industry
 - Increased emphasis from major funders
 - NIHR i4i, Horizon 2020
 - ‘Open innovation’

Precision Medicine/Care

- Opportunities to personalise appropriate treatment and care using a *bio-psycho-social* model
- Infrastructure provides significant platform for experimental and precision medicine/care
- *HealthWise Wales*
- Future development plans
 - Specific collaborative schemes dedicated to experimental and precision medicine/care
 - 'Precision Medicine Network' – first meeting Autumn 2015



Doeth Am Iechyd
Cymru
HealthWise
Wales



Communication

- Effective communication with the public and stakeholders essential for success
- Regular flows of information
- Showcasing successes & examples of good practice
- New website
- Social media
- Publications
- Open meetings
- Annual conference



@ResearchWales



www.gov.wales/healthandcareresearch

The screenshot shows the website for Ymchwil Iechyd a Gofal Cymru (Health and Care Research Wales). The header includes the Welsh Government logo and the organization's name in both Welsh and English. A navigation menu lists 'About', 'Funding', 'Industry', 'Public', 'Research Support', 'News', and 'Events'. The main content area features a video player with a play button and a description of the organization. A sidebar on the right lists navigation options: 'About', 'Aims & Objectives', 'Research Infrastructure', 'Community', 'Research Studies in Wales', and 'Policy & strategy'. Below the sidebar is a photograph of a modern building labeled 'Industry'. The footer shows the organization's logo and name.

Llywodraeth Cymru
Welsh Government

Ymchwil Iechyd
a Gofal Cymru
Health and Care
Research Wales

Accessibility Contact

Cymraeg Search

About Funding Industry Public Research Support News Events

Home > About

About

Health and Care Research Wales is a national, multi-faceted, virtual organisation funded and overseen by the Welsh Government's Division for Social Care and Health Research.

It provides an infrastructure to support and increase capacity in research and development (R&D), runs a range of responsive funding schemes and manages the [NHS R&D funding allocation](#).

About

- Aims & Objectives
- Research Infrastructure
- Community
- Research Studies in Wales
- Policy & strategy

Industry

Internet 100%



Thank You

Claire Bond
Michael Bowdery
Dean Chapman
Rosalie Derrick
Louise Dunstan
Eleri Evans
Catrin Harris
Connagh Howitt
Rhodri Huws
Angharad Kerr
Ralph Larner

Bev Luchmun
Angela Martin
Jacky Maxwell
Alex Newberry
Andy Privett
Carys Thomas
Nick Thomas
Dan Venables
Katie Welch
Joanna Xerri



Ymchwil Iechyd
a Gofal **Cymru**
Health and Care
Research **Wales**