

# Research with Impact

Professor Jon Bisson



# Vision

*For Wales to be internationally recognised for its excellent health and social care research that has a positive impact on the health, wellbeing and prosperity of the people in Wales*

# What is Research Impact?

*“An effect on, change or benefit to the economy, society, culture, public policy or services, health, the environment or quality of life, beyond academia”*



Llywodraeth Cymru  
Welsh Government

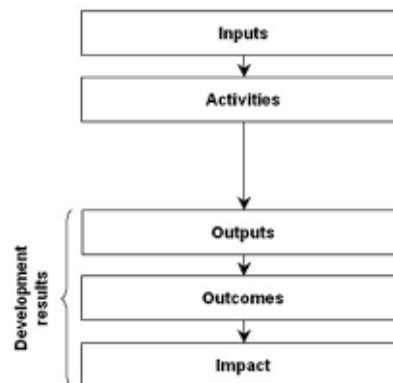
# Achieving Research Impact



Results Based Accountability  
approach to measuring outcomes

How much did we do?	How well did we do it?
Is anyone better off?	
Quantity	Quality

## Health and Care Research Wales Performance Management Framework





Ymchwil Iechyd  
a Gofal Cymru  
Health and Care  
Research Wales

We're reviewing data for our new performance indicators. So far we know that...

## NHS Studies 15/16

% of Non-commercial CRP studies receiving NHS research permission within 40 day target:  
**71%** compared to 69% in 14/15.

% of Commercially sponsored studies receiving NHS research permission within 40 day target:  
**93%** compared to 83% in 14/15.

### Engagement 15/16

**749**

Followers



### Mentoring 16/17

**15**

early career researchers participating in a new pilot.



### Grant Scheme Awards 2015 and 2016



Total awarded: £5.5m

Health and Social Care  
research awards

**10**

PhD Studentships

**5**

RfPPB awards

**10**

Fellowships

**3**

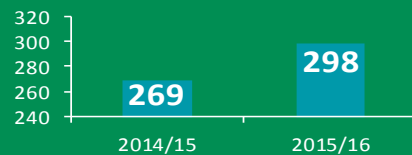


### Public Involvement 15/16

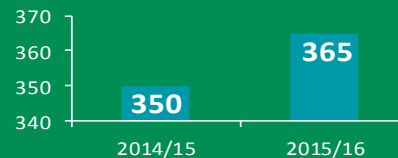
\* Involving People Network membership increased to **169**.

\* **50** public involvement opportunities offered, of which **44** recruited.

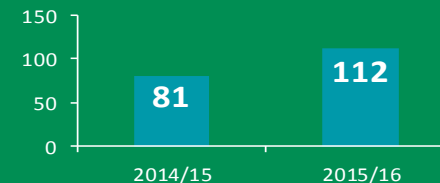
### Completed Ethical reviews of research study applications



### Recruiting non-commercial NHS portfolio studies



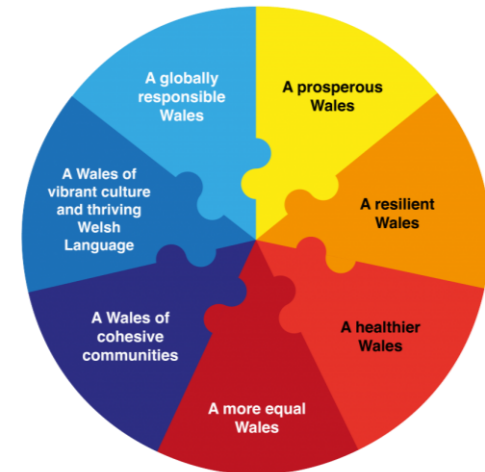
### Recruiting commercial NHS studies



## NHS Studies

# REF (2014) Impact Case Examples

- Cognitive stimulation for people with mild to moderate dementia
- Psycho-education for bipolar disorder
- School-based smoking prevention programme
- New standard of care for locally advanced prostate cancer
- Improved breastfeeding rates
- Supported living environments for older people
- Reduced unnecessary attendance at hospital emergency departments
- Biocompatible peritoneal dialysis solution development



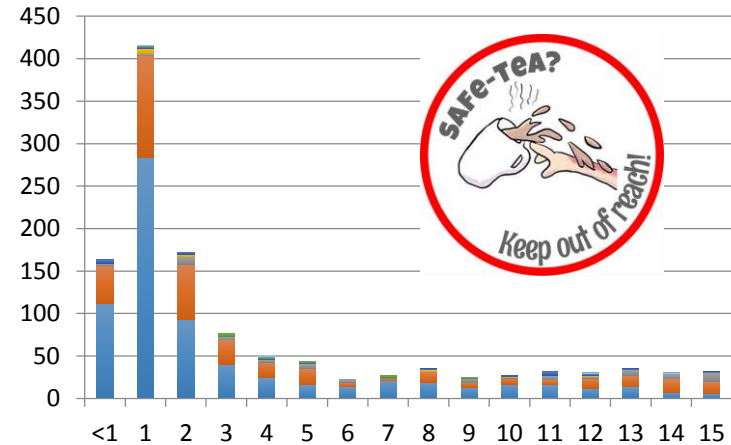
**Pedair egwyddor gofal iechyd darbodus**

<p>Ailfodelu'r berthynas rhwng y defnyddwyr a'r darparwr ar sail CYDGYNHYRCHU</p>	<p>GOFALU AM y rhai â'r anghenion iechyd mwyaf YN GYNTAF</p>	<p>Dim ond gwneud YR HYN SYDD EI ANGEN</p> <p>a PHEIDIO AG ACHOSI NIWED</p>	<p>Lleihau AMRYWIADAU AMHRIODOL</p> <p>drwy ddulliau gweithredu sy'n SEILIEDIG AR DYSTIOLAETH</p>
---	--	---	---

I gael rhagor o wybodaeth ewch i [www.gofaliechyddarbodus.cymru](http://www.gofaliechyddarbodus.cymru)

# Potential Future Impact Examples

- Children’s Burns Research Centre
- Developing Evidence Enriched Practice (DEEP)
- Social Care Wales Knowledge Mobilisation Pathway
- Diagnosis of Urinary Tract infections in Young children (DUTY) Trial



**DEVELOPING EVIDENCE-ENRICHED PRACTICE IN HEALTH AND SOCIAL CARE WITH OLDER PEOPLE**

Nick Andrews, John Gabbay, André le May, Emma Miller, Martin O'Neill and Alison Petch





Ymchwil Iechyd  
a Gofal **Cymru**

Health and Care  
Research **Wales**



[www.healthandcareresearch.gov.wales](http://www.healthandcareresearch.gov.wales)



@ResearchWales