



Wales COVID-19
Evidence Centre
Canolfan Dystiolaeth
COVID-19 Cymru

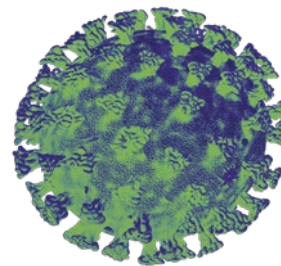
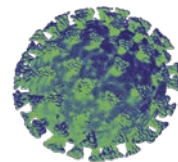
Looking ahead: New COVID-19 research and evaluation capacity for Wales

Professor Kieran Walshe, Director Health
and Care Research Wales

Professor Adrian Edwards, Director of Wales
COVID-19 Evidence Centre



Ymchwil Iechyd
a Gofal **Cymru**
Health and Care
Research **Wales**

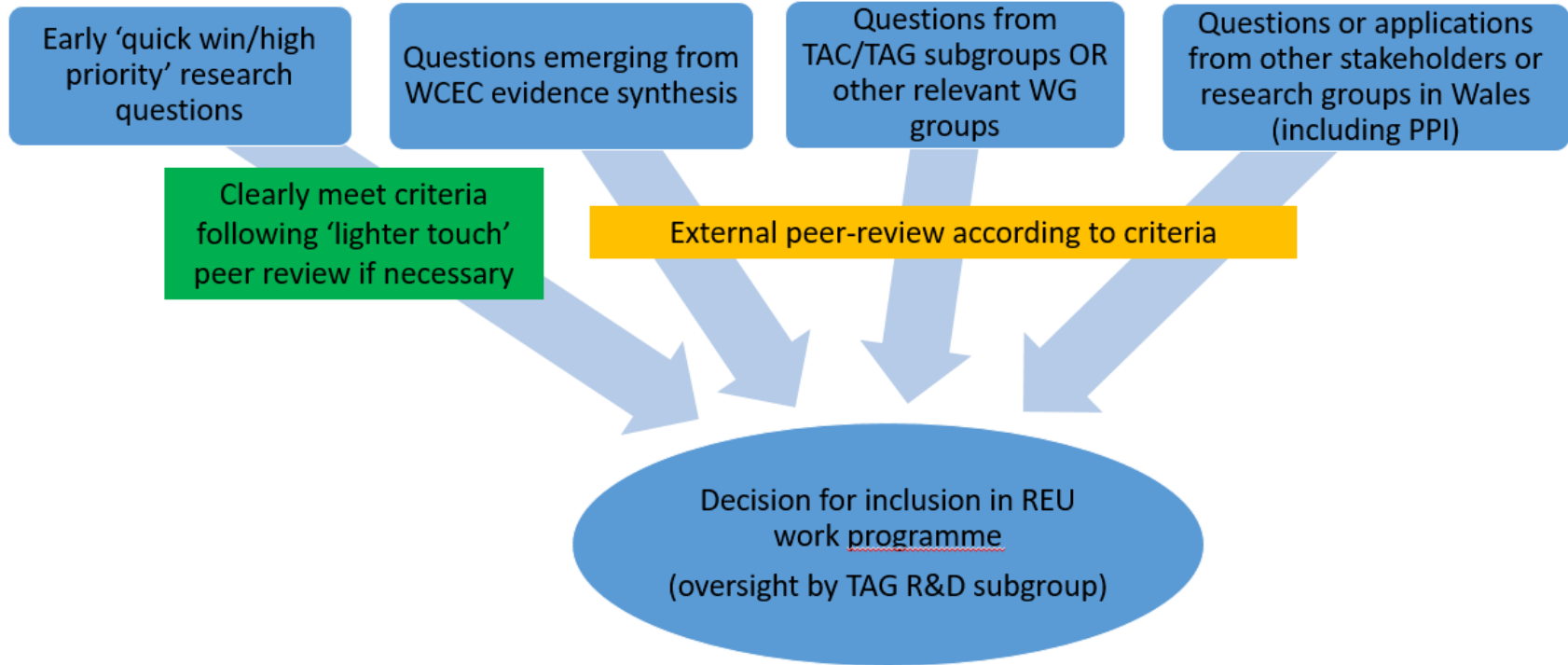


Ariennir gan
Lywodraeth Cymru
Funded by
Welsh Government

Rapid Evaluation Unit: core purpose

- To address the need for **relevant, rapid and robust primary or 'new' research**, alongside evidence synthesis, to address pandemic challenges in Wales
- The Rapid Evaluation Unit will commission/conduct research that:
 - has an **applied focus**
 - arises out of **policy need**
 - can be **rapidly undertaken** to inform policy decisions over the next year (funded to March 23)

Summary of process



Criteria for inclusion

- 1) Addresses the pandemic challenges (including recovery) in the **context of Wales**
 - **high-priority** question & clear **policy implications** for impact
- 2) Builds on **research already undertaken in Wales** and their further unanswered questions
 - Evidence Centre Rapid Reviews
 - COVID funding programmes – UKRI etc
- 3) **Utilises particular Welsh expertise** for innovative UK / internationally important work on COVID-19 illness, impacts and recovery
- 4) Deliverable **within 1 year**, offer **value for money**, potential for **impact/action**. Must **not** be more suitable **for alternative funding**.

Evidence gaps identified by completed reviews

Long term impact on health and social care workers

Long term impact of lockdown/school closures on CYP and mitigating strategies

Interventions for supporting post-secondary education

Benefits, disbenefits and costs of IPAC measures in care sector

Alternate emergency graduate education delivery for HCPs

Distance to MVC as a barrier to vaccine equity

Adherence in using PPBs in public settings

Home monitoring using pulse oximetry

Cancer diagnosis - innovations (e.g. cytosponge) for triage in PC

Cancer diagnosis – direct referral to specialist investigation

Strategies to address backlog in orthopaedic surgery – demand side

Strategies to address backlog in orthopaedic surgery – supply side

How we will do this

- Stakeholder consultation process
 - Public & Patients
 - Health & Social Care Boards; professional societies etc
 - Welsh Government / Technical Advisory Group (TAG) & sub-groups
- Prioritisation
 - Core Team, public contributors
 - TAG R&D subgroup oversight
- Research
 - Research staff in Unit
 - Partners – Welsh universities, NHS Boards etc
- Peer review
- Knowledge mobilisation
 - Communications



How we will do this

- Stakeholder consultation process
 - Public & Patients
 - Health & Social Care Boards; professional societies etc
 - Welsh Government / Technical Advisory Group (TAG) & sub-groups
- Prioritisation
 - Core Team, public contributors
 - TAG R&D subgroup oversight
- Research
 - Research staff in Unit
 - Partners – Welsh universities, NHS Boards etc
- Peer review
- Knowledge mobilisation
 - Communications



Wales COVID-19
Evidence Centre
Canolfan Dystiolaeth
COVID-19 Cymru

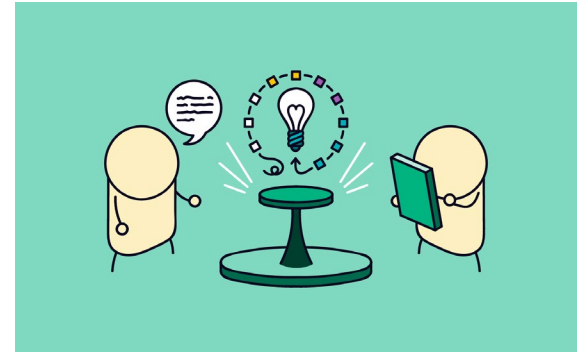
How we will do this

- Stakeholder consultation process
 - Public & Patients
 - Health & Social Care Boards; professional societies etc
 - Welsh Government / Technical Advisory Group (TAG) & sub-groups
- Prioritisation
 - Core Team, public contributors
 - TAG R&D subgroup oversight
- Research
 - Research staff in Unit
 - Partners – Welsh universities, NHS Boards etc
- Peer review
- Knowledge mobilisation
 - Communications



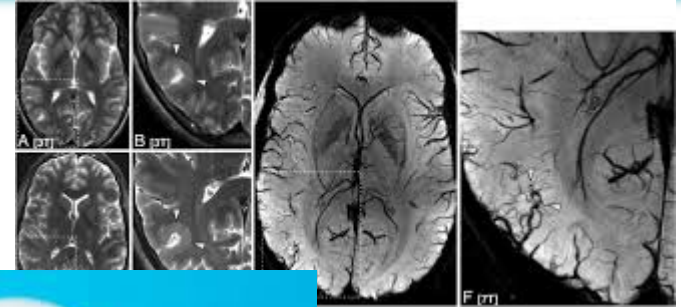
Types of studies

- Relatively small-scale research projects proposed by researchers in Wales
- Range of evaluation methods
 - quantitative
 - qualitative
 - case study methods
 - linked data



Early potential programme

- Long Covid; 7T magnetic resonance imaging (MRI) for brain and brainstem
- Neutralising monoclonal antibodies (nMABs) and other antiviral treatments
 - real world effectiveness study, SAIL Databank
- Vaccination attitudes to inform further booster programmes



Early potential programme

- Social care pay framework
 - real living wage
- Evaluation of mental health of key workers to understand impact and inform intervention
 - evidence synthesis showed need for longitudinal evaluation
- Changes in GPs' cancer symptoms referral behaviours during pandemic
 - qualitative work
- Evaluation of CO₂ monitors in schools
 - potential TAC prioritisation
- Further questions derived from evidence syntheses



Next steps

- Feedback welcome
- Reach out to stakeholders for new research questions in coming weeks

Interactive Session: Help us to prioritise the research needs and questions that are important

(primary research & reviews)