

# **Educating & training undergraduate therapeutic radiographers: a collaborative approach to building research capability in NHS Wales**

**Catherine Matthams**

**Operational Superintendent: Radiotherapy, Velindre Cancer Centre, Cardiff**

**Lynn Mundy**

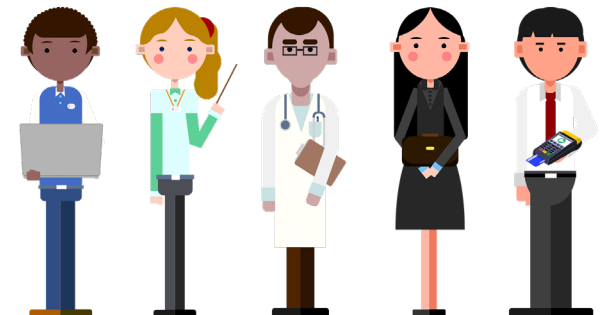
**Professional Head: Radiotherapy & Oncology, School of Healthcare Sciences, Cardiff University**

# Educating & training undergraduate therapeutic radiographers: a collaborative approach to building research capability in NHS Wales

## Background

Research program pre-covid

- Increasing student numbers.
- Placement timing – challenging.
- Differing experiences.
- Limited program content.
- Lack of staff/student engagement.
- Becoming difficult to support.





## The Vision

**To produce a quality undergraduate All  
Wales research program that:**

- Supports students to deliver evidenced based practice.
- Empowers creativity & curiosity.
- Develops innovators of the future.
- Creates a passion for research.
- Develops research capability in the future workforce.
- Instills that research is the "business of everyone."
- Aids post-graduate research.

## **HOW do we make a positive change?**

- **Collaboration** - Cardiff University & Velindre Cancer Centre.
- +ve resources – **great people with knowledge and skills.**
- Post-covid world so **new ways of working** essential.
- **Online** delivery platform.
- **Increase the numbers** for interaction and engagement.
- **Program timing** to support academic research project (Nov).
- **Sustainable** - program to be delivered by a **variety of teams** and individuals.
- **Development** of program content.
- Improve student/staff **interaction and engagement.**
- **Consolidation** of student learning – tasks & reflection.

## Program Content

**Radiotherapy  
trials QA**

**Role of the research  
radiographer**

**Radiotherapy  
clinical trials**

**Radiotherapy  
developments &  
implementation**

**Role of the R+D office**

**Clinical governance**

**GCP**

**Informed consent**

**Service  
improvement  
in the NHS**

**Research and the  
Consultant  
Radiographer**

**Screening &  
recruitment**

**Prostate cancer  
clinical trials**

**Breast cancer  
clinical trials**



Idea



To do



Doing



Done

## Where are we now?

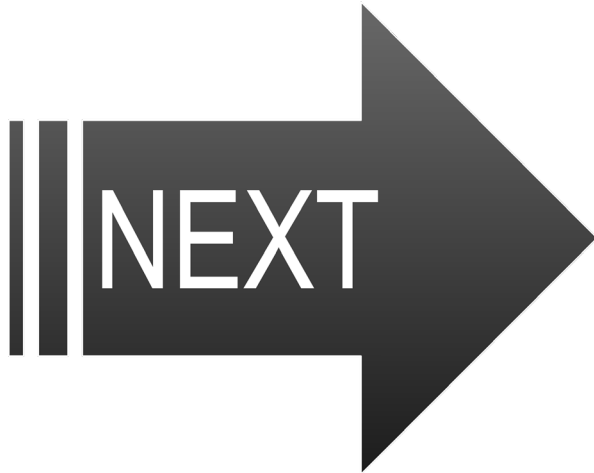
- Program continues to evolve.
- Each iteration it gets closer to the aim.
- Adapting to technology and new ways of working.
- Collaboration with South West Wales Cancer Centre.





## What have we learned?

- It has been a journey, and at times very difficult.
- Only works as a collaborative effort across Wales.
- Respect for each other's roles and responsibilities.
- Include evidence in delivery – show how the research changed clinical practice!
- Students showcase their learning when presenting their task - each time we see more!



## **What do we need to do next?**

- Refine the program for 2023-2024
- Collaborate with the Team at North Wales  
Cancer Centre 2023/24
- Keep the momentum going
- Keep engaging
- Keep enthused
- **KEEP GOING!**

**Thank you for listening**



## List of contributors - with many thanks to:

Ashleigh Jones

Gillian Palmer

Matthew Lazarus

Ashleigh Young

Jack Pritchard

Mike Morgan

Bethan Williams

Jane Capparos

Nadia Saunders

Catrin Rock

Jane Mathlin

Owain Woodley

Claire Heymann

Jenna Davies

Stuart Foyle

Elizabeth Jenkins

Jenny Watson

Victoria Morris

Emily Harris

Maria Johnstone