

Support and Delivery 2023 outlook

Dr Nicola Williams

Director of Support & Delivery, Health and Care Research
Wales

Nicola.williams55@wales.nhs.uk

Policy Context – UK Vision for Clinical Research Delivery

March 2021



Implementation focus July 2022

1. A sustainable and supported research workforce
2. Clinical research delivery embedded in the NHS
3. People-centred research
4. Streamlined, efficient and innovative research
5. Research delivery enabled by data and digital tools

Wales actions

Research careers (delivery and leading research)
Faculty – personal award holders
Workforce planning

Framework for NHS organisations in Wales – what
excellence looks like in R&D
Board Champions

Equality, diversity and inclusion
Participant lens/experience as a priority

Improving set-up process and oversight – practical and
policy level
Updated indemnity – supporting working across
boundaries and accepting set-up done by others

Data enabled feasibility, ‘finding’ people, supporting
delivery and flow of outcome data

Implementation focus July 2022

1. A sustainable and supported research workforce
2. Clinical research delivery embedded in the NHS
3. People-centred research
4. Streamlined, efficient and innovative research
5. Research delivery enabled by data and digital tools

Reset Programme

Research delivery service improvements over the last few years

- One Wales coordinated set up across multiple sites/NHS organisations with single point of contact across all sites per study
- Transition from retrospective activity based support funding to a prospective research delivery needs-based model
- Single price for Wales for commercial research
- Single contracts/ costings negotiation (all-Wales agreement to implement National Contract Value Review (NCVR))
- High capacity dedicated research delivery facilities
- GMO capability
- Wide geographical coverage
- Access to target populations through data driven delivery models
- Coordinated public engagement strategies
- Standard operational processes across sites





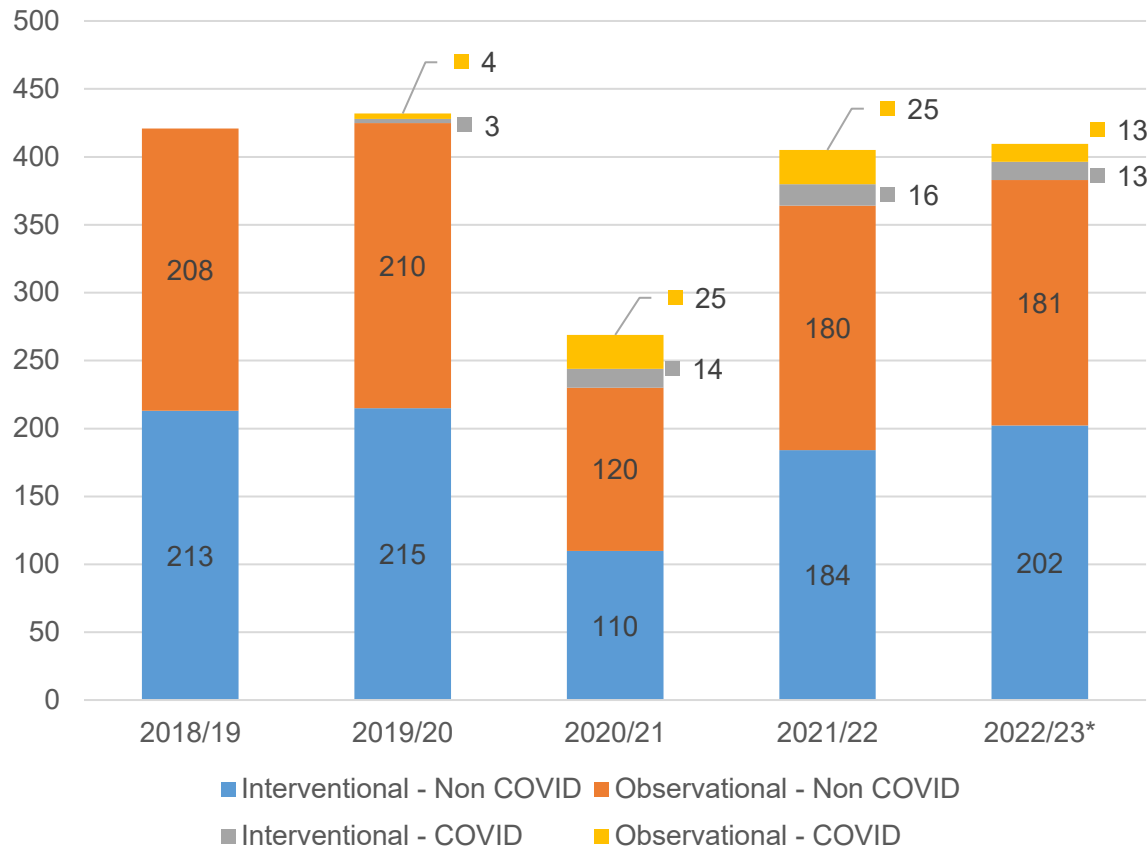
Ymchwil Iechyd
a Gofal Cymru

Health and Care
Research Wales

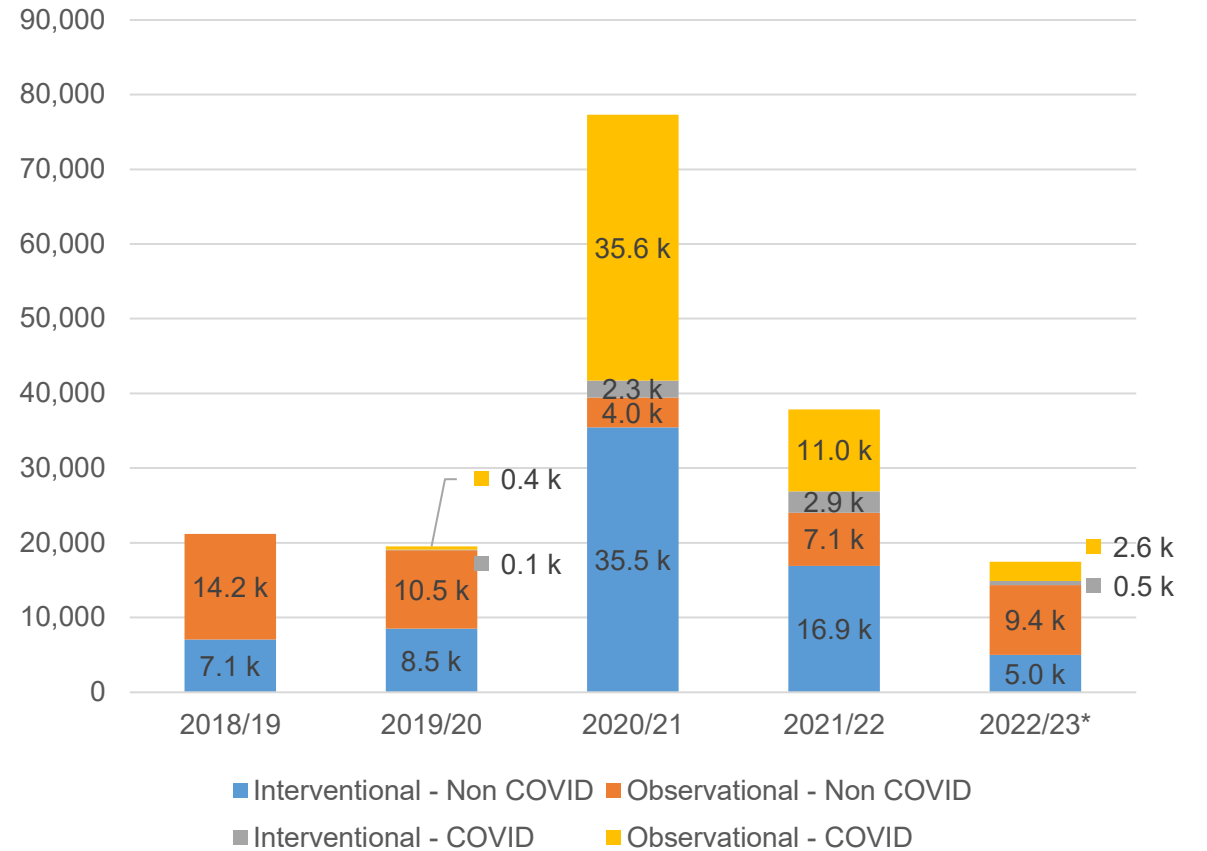
Non-Commercial research

*2022/23 figures are projected

Open and recruiting studies



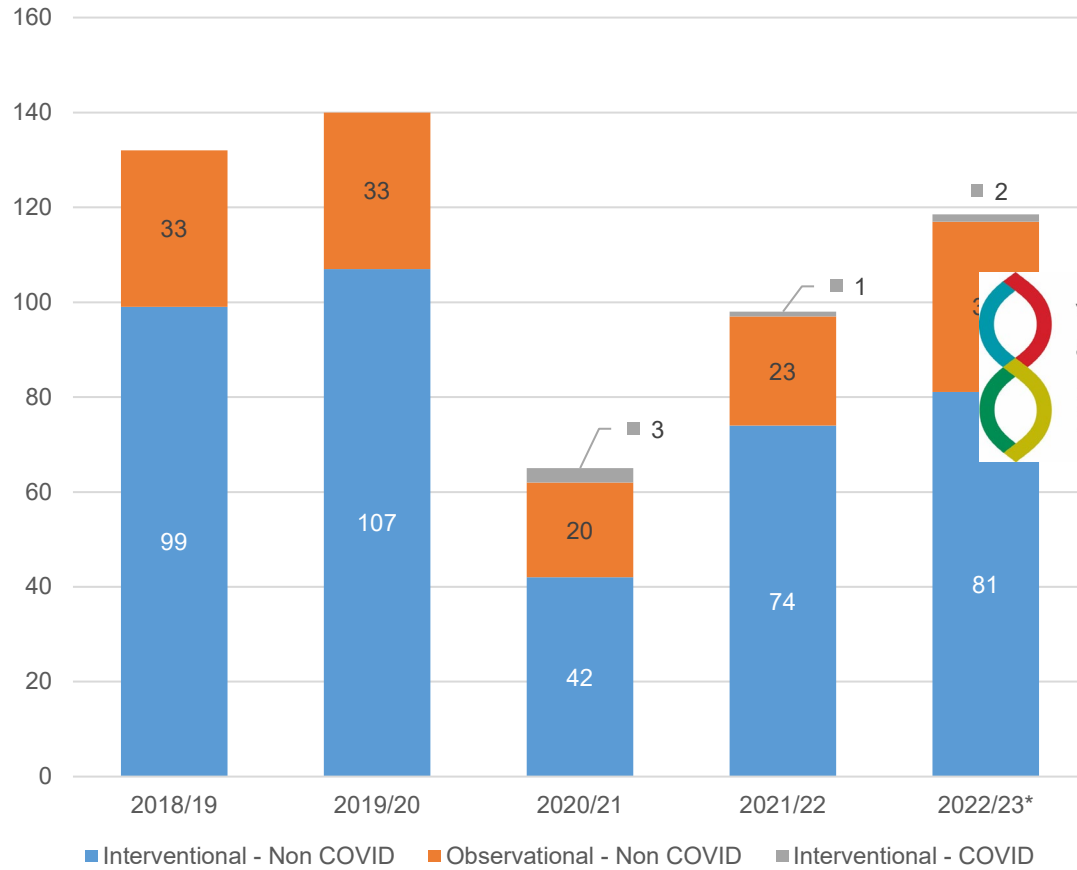
Recruitment



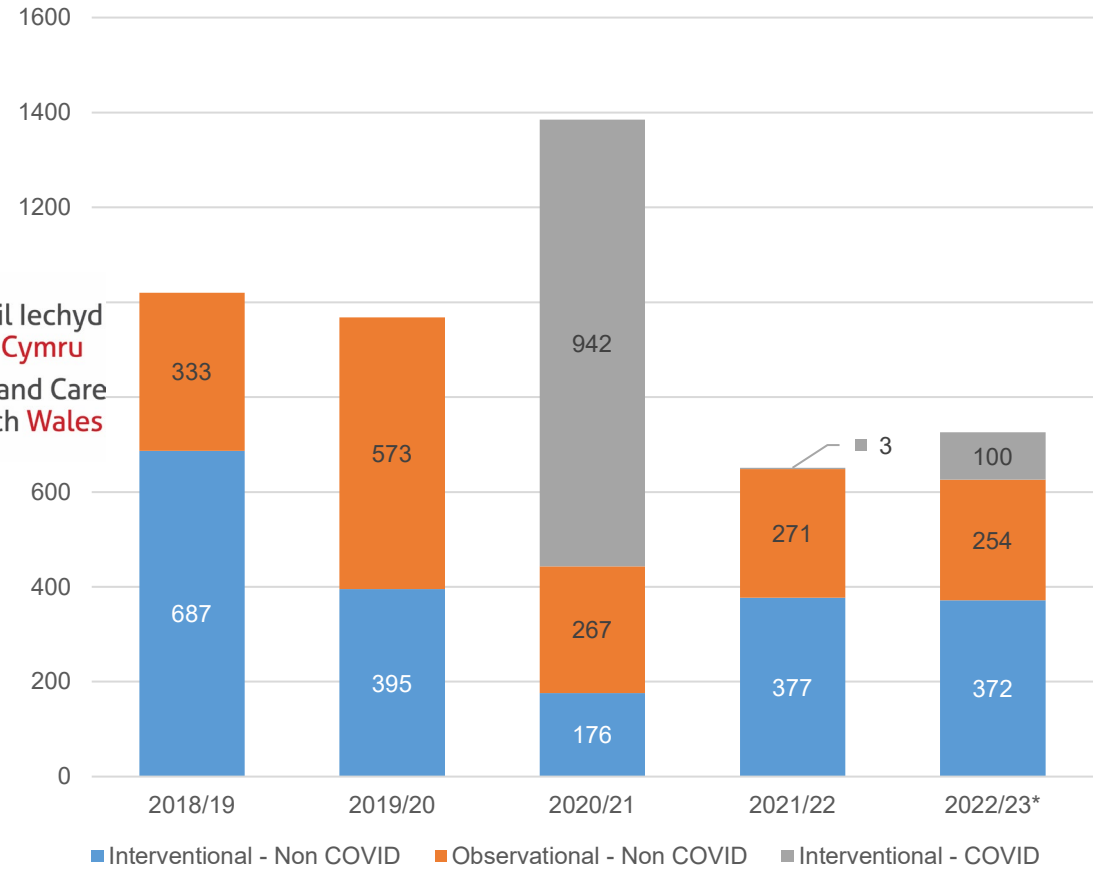
Commercial research

*2022/23 figures are projected

Open and recruiting studies

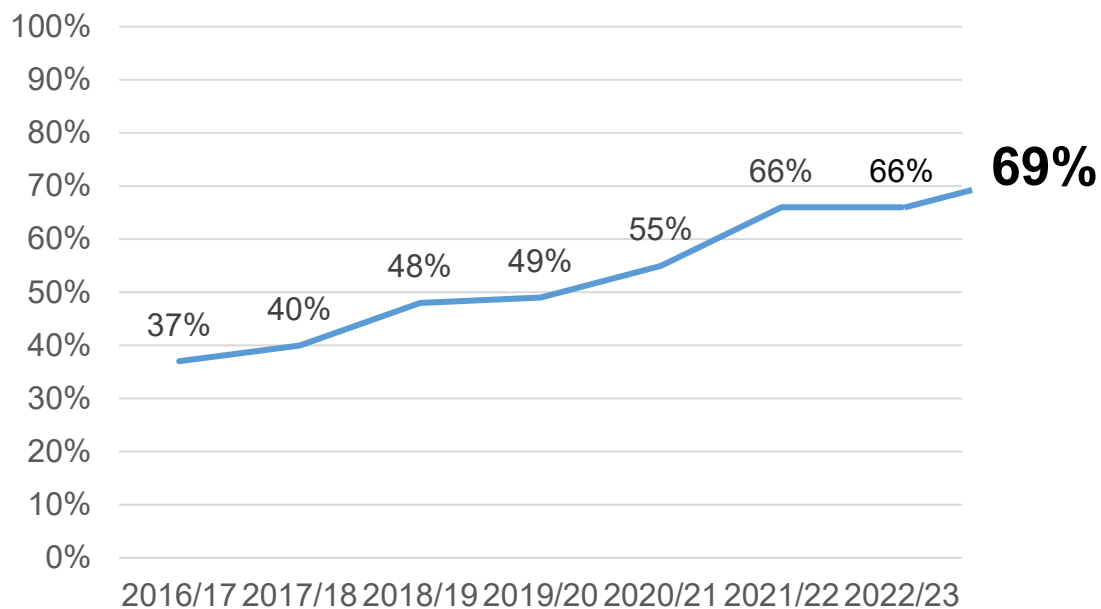


Recruitment



Are we meeting expectations?

Non-commercial closed studies RTT %



55% average RTT for closed commercial

NEWS

Home | Cost of Living | War in Ukraine | Coronavirus | Climate | UK | World | Business | Politics | Tech

Wales | Wales Politics | Wales Business | North West | North East | Mid | South West | South East | Cymru | Local News

Motor neurone disease: 'False hope' given to Welsh patients

© 15 February 2022

Ble bydden ni heb ymchwil?
Where would we be without research?

Motor Neurone Disease studies in Wales hoping to make a difference
21 June

ABPI Clinical Research Report

September 2021

Key messages: Studies open in UK is declining, recruitment is declining, UK global ranking is dropping. The UK has not recovered from COVID19 disruption.

UK performance in clinical research



Domestic trends

Industry appetite to conduct clinical trials in the UK has remained relatively constant over recent years, but the numbers of trials initiated and share of global recruits is declining.

International trends: clinical trial initiation

From 2018 to 2020, the UK has retained its competitive early clinical research environment (Phase I); however, is falling behind in later phases (Phase II and III).



Access report online:
<https://www.abpi.org.uk/publications/clinical-research-in-the-uk-an-opportunity-for-growth/>

UK Gov/Industry Partnerships

The Moderna logo consists of the word "moderna" in a lowercase, red, sans-serif font. Below the text is a horizontal dashed blue line.

£1.5-2 billion over 10 year vaccine pipeline (trials, manufacture, deployment)

Trial Pipeline based on Moderna mRNA technology

Respiratory (first few years) then rare diseases (3-5 yrs) then oncology (5-10 yrs)

Improving the BAU pathway for study set-up and delivery

The Biontech logo features the word "BIONTECH" in a green, uppercase, sans-serif font. To the right of the text is a circular green icon containing white, curved lines that resemble a DNA double helix or a stylized virus particle.

Detail of agreement being finalised – cancer vaccines



Office for
Life Sciences

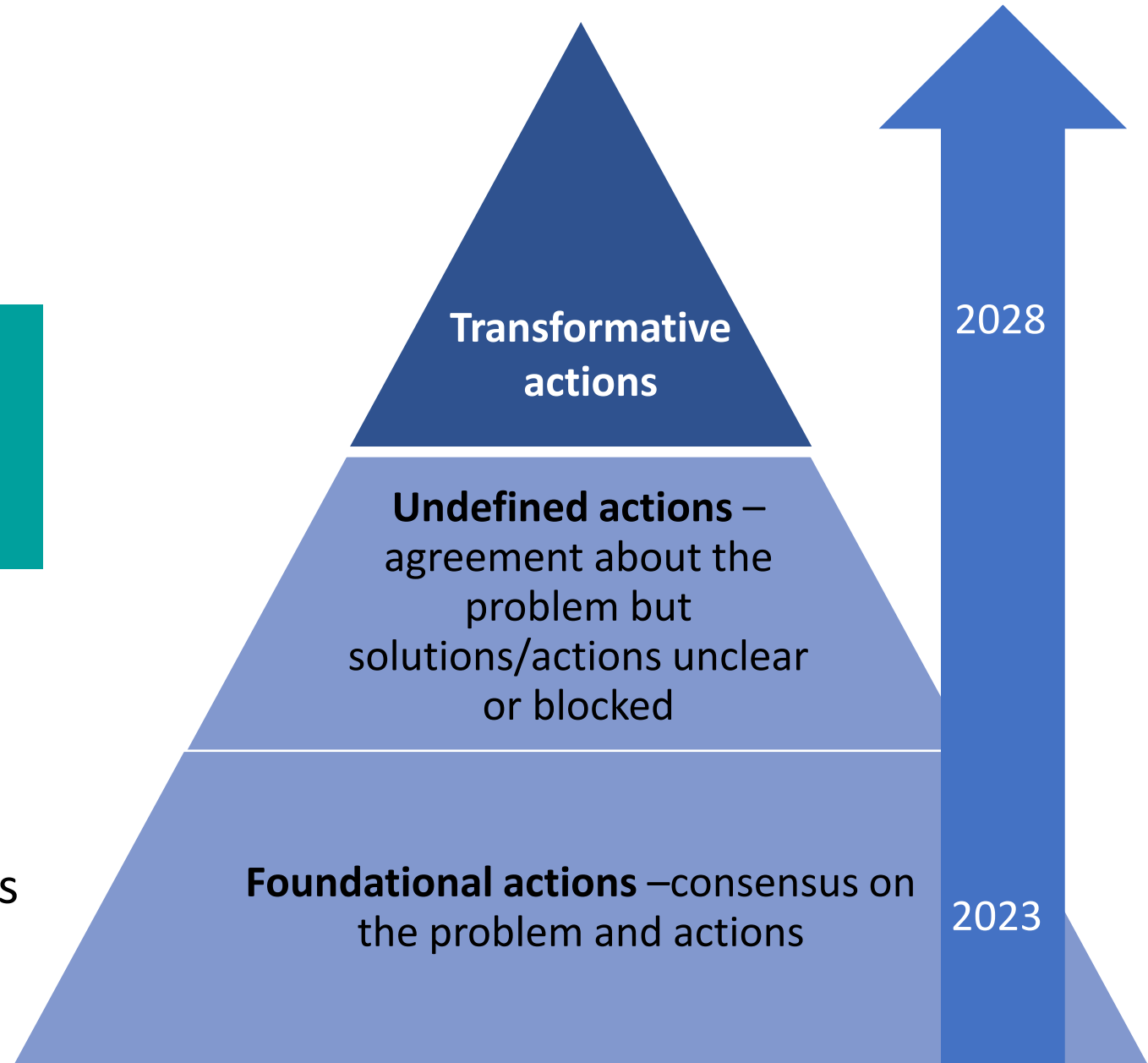
**Independent Advice on Clinical Trials
February 2023**

Chair: Lord O'Shaughnessy

Focus – Phase III/IV commercial trials

Reporting April 2023

Advice on a short-list of priority actions
for whole system



In Wales....



**Research
in Wales**

Our offer to the life sciences sector

- World-Leading Research
- Streamlined Services
- Vibrant Research Culture

Ymchwil Iechyd
a Gofal Cymru
Health and Care
Research Wales

Llywodraeth Cymru
Welsh Government

The poster features a dark grey background with a circular inset showing a scientist in a lab coat and safety glasses. The main text is in white, and the logos are in the bottom right corner.



Health and Care Research Wales

One Wales
Delivering research

Ymchwil Iechyd
a Gofal Cymru
Health and Care
Research Wales

Alcriston
Llywodraeth Cymru
Welsh Government

The poster has a red background with a white map of Wales. The text is in white, and the logos are in the bottom left corner.

Policy

Ministerial commitment to UK action
Health and Care Research Wales Plan
Wales Industry Engagement Policy
(2023)

Continued Engagement

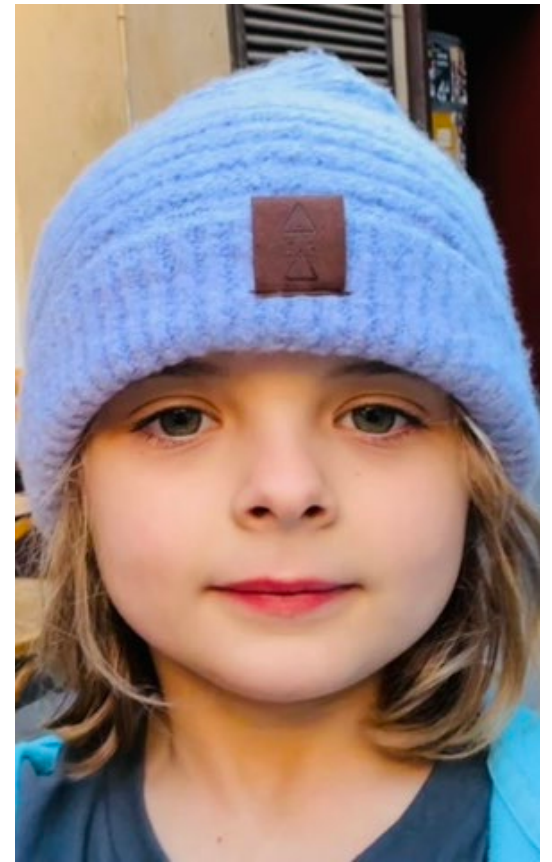
BioWales / BioInternational (June)
UK partnership deals implementation
UK Specialty Groups
Board Champions

Processes

Continue driving delivery service
improvement – our ‘best version of
normal’ and step-change where
required

Build on strengths in coordination /
Once for Wales/ One Wales

Identifying and resolving barriers





Movements have narratives. They tell stories, because they are not just about rearranging economics and politics. They also rearrange meaning. And they're not just about redistributing the goods. **They're about figuring out what is good.**

Marshall Ganz



Team Wales

collaboration for resilience
and growth

- What motivates you most about your work?
- What could be possible if we focused our collective efforts?
- How could you begin now, **today**?
- What are the practical, doable actions that you are in control of – that you could start **tomorrow**?
- What are the actions that you know are needed, that you want to influence **for the future**?

Next	The digital agenda for research in Wales	
11.30	Delivering commercial research	Delivering primary and community care research
13.30	Research communications	Career development
14.40	Innovation in research delivery	

