



**MAY 19, 2023**

**ONLINE + POSTGRADUATE CENTRE**  
YSBYTU GWYNEDD, BANGOR

**WHO IS IT FOR?**

- Healthcare professionals
- Health service researchers
- Service users
- Trainee students
- Technology specialists
- Healthcare managers

**FOR FURTHER INFORMATION.**

[c.subbe@bangor.ac.uk](mailto:c.subbe@bangor.ac.uk)

**TO BUY TICKETS**

PRICED £0.99 - £99

<https://bit.ly/PPS2023>

**CPD.**

Applied for 5 points

**+ Cleifion Wrthy Llywy**



**Patient Powered Safety**

**Invitation to the 5th  
symposium on patient  
safety in Bangor**

**There has never been a time where  
opportunities have been greater to  
transform healthcare than today.  
At the same time the complexity of  
diseases and treatments is  
increasing challenges to the safety  
of care in hospital.**

We are inviting you to a one - day gathering with  
passionate contributions from patient safety  
experts and those affected.

We will explore challenges to delivery  
of safe care around key topics.  
How can the NHS work with patients  
to learn from errors?

What examples are there of patients  
managing complex health risks already?

How should this work in hospitals?

What are the risks and benefits of a more active  
role of patients in their care?



**GIG  
CYMRU  
NHS  
WALES**

Bwrdd Iechyd Prifysgol  
Betsi Cadwaladr  
University Health Board



**PRIFYSGOL  
BANGOR  
UNIVERSITY**



MEDICAL  
TECHNOLOGY

**19 MAI, 2023**

**AR-LEIN + CANOLFAN ÔL-RADD**  
YSBYTY GWYNEDD, BANGOR

**AR GYFER PWY MAE'R GWEITHDY?**

- Gweithwyr gofal iechyd proffesiynol
- Ymchwilywyr gwasanaeth iechyd
- Defnyddwyr gwasanaeth
- Myfyrwyr dan hyfforddiant
- Arbenigwyr technoleg
- Rheolwyr gofal iechyd

**AM RAGOR O WYBODAETH**

c.subbe@bangor.ac.uk

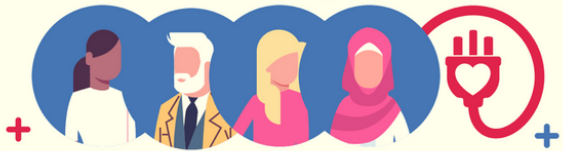
**I BRYNU TOCYNNAU £0.99 - £99**

<https://bit.ly/PPS2023>

**DATBLYGIAD PROFFESIYNOL  
PARHAUS**

Cymwys am 5 pwynt

**+ Cleifion Wrth y Llyw**



**Patient Powered Safety**

**Gwahoddiad i'r 5ed  
symposiwm ar  
ddiogelwch cleifion  
ym Mangor**

Ni fu erioed mwy o gyfleoedd  
i drawsnewid gofal iechyd na heddiw.  
Ar yr un pryd, mae cymhlethdod  
clefydau a thriniaethau yn cynyddu  
heriau i ddiogelwch gofal  
mewn ysbytai.

Rydym yn eich gwahodd i gynhadledd  
undydd gyda chyfraniadau gan  
arbenigwyr diogelwch cleifion a'r rhai  
yr effeithir arnynt.

Byddwn yn trafod heriau darparu gofal  
diogel yng nghyd-destun pynciau  
allweddol. Sut gall y GIG weithio gyda  
chleifion i ddysgu o gangymeriadau?

Pa enghreifftiau sydd eisoes yn bodoli o  
gleifion yn rheoli risgiau iechyd  
cymhleth?

Sut dylai hyn weithio mewn ysbytai?

Beth yw risgiau a manteision cyfraniad  
mwy gweithredol gan gleifion at eu  
gofal?



GIG  
CYMRU  
NHS  
WALES

Bwrdd Iechyd Prifysgol  
Betsi Cadwaladr  
University Health Board



PRIFYSGOL  
BANGOR  
UNIVERSITY