



Speakers

Professor Steve Bain



Steve Bain is the Clinical Director of the Diabetes Research Unit in Swansea University and Medical Director for Research & Development for Swansea Bay University Health Board. Professor Bain was appointed to a newly created Chair in Medicine (Diabetes) in the University of Wales Swansea in 2005. His clinical interests include the genetics of diabetic nephropathy, new therapies for diabetes and the provision of diabetes services within the community. He has been Chief Investigator for several multi-centre trials investigating novel therapies for diabetes. Professor Bain is the Diabetes Lead Clinician for the Swansea Bay University Health Board, chairs the Joint Clinical Research Facility in Swansea and was Clinical Director of the Academic Health Science Collaboration in Wales until September 2015. He chaired the Diabetes & Endocrinology Specialist Training Committee for Wales 2010-2017 and is currently Chair of the National Specialist Advisory Group for Diabetes in Wales.

Mr David Bosanquet



David Bosanquet is a Consultant Vascular Surgeon and Honorary Senior Lecturer working in the South East Wales Vascular Network. He qualified from Cardiff University in 2006, and undertook his Surgical Training in South Wales and Bristol. His research interests include amputation surgery, wound healing, arterial revascularisation and collaborative research. He has been awarded funding from Health and Care Research Wales programmes

Michael Bowdery



Michael is responsible for the oversight of Health and Care Research Wales research funding schemes, research development infrastructure, UK partnership working (research funding opportunities), cross-funder initiatives and budget monitoring. Since 2016 he has represented Health and Care Research Wales on the international Ensuring Value in Research Funders Forum (EViR). Michael is responsible for the oversight of Health and Care Research Wales research funding schemes, research development infrastructure, UK partnership working (research funding opportunities), cross-funder initiatives and budget monitoring. Since 2016 he has represented Health and Care Research Wales on the international Ensuring Value in Research Funders Forum (EViR). Michael has also worked as a media officer with responsibility for both media relations and the management of the Chief Medical Officer's website. He has experience of crisis management, through secondments to the Welsh Government's Agriculture Department and Foot and Mouth Inquiries Team.

Dr Tegan Brierley-Sollis



Tegan Brierley-Sollis is a Lecturer in Policing, Criminology, and Trauma-Informed Approaches at Glyndŵr University. Tegan is a member of Cyfiawnder: The Social Inclusion Research Institute at Wrexham Glyndŵr University and the Trauma and ACE (TrACE) informed university project. Tegan has experience working and volunteering with children and adults involved in the criminal justice system, across both statutory and voluntary services. During her PhD studies, Tegan created a concept to explain trauma and trauma-informed practice in a clear and accessible way which has since been developed into an animation titled 'Navigating the Storm'.

Jessie Buchanan



Jessie Buchanan coordinates the Together for Change (TfC) Programme, a third sector led strategic partnership started by the grass roots charity Solva Care with partners PAVS and PLANED. Jessie has progressed the coproduced TfC Programme of work in three key areas: strategies based on social and green models of wellbeing and prevention; building and using the evidence base to inform action; direct support for communities to meet their expressed needs and sustainability. Jessie has considerable experience and knowledge of leading collaborative, multisectoral projects and is committed to working in areas that places the voices and needs of citizens and their communities of place at the heart of cross sectoral working.

Oliver Buckley-Mellor



Oliver Buckley-Mellor is an Innovation and Research Policy Manager at the Association of the British Pharmaceutical Industry. He has spent most of his career working on the policy environment for clinical research, having previously served as a Policy Advisor at Cancer Research UK. Oliver has an MA in Public Administration and Public Policy and a BA in History.



Professor Monica Busse



Professor Monica Busse is a chartered physiotherapist, and trials methodologist based in the Centre for Trials Research (CTR) at Cardiff University. She was appointed as the Director of the new Health and Care Research Wales Faculty, set up to make sure health and social care researchers have the right training and support to develop their careers. She is Director of Mind, Brain and Neuroscience Trials and a Health and Care Research Wales Senior Research Leader. Her undergraduate degree was in Physiotherapy and she has further post-graduate qualifications in Biomedical Sciences (Ergonomics) and Biomechanics. Her PhD was in human movement sciences and neurology with much of her research focussing on clinical neurology and neuroscience setting applied to allied health and care research. Monica has a longstanding interest in research methodology. She was awarded an NIHR/Health and Care Research Wales post-doctoral fellowship in 2013 and used this opportunity to progress her formal training in trials methods and was awarded a Diploma in Clinical Trials from LSHTM in 2017.

Dr Kate Button



Kate Button is a chartered physiotherapist and her area of specialism is musculoskeletal disorders. Her research interests are in the development of digital interventions to support home-based physiotherapy. She is part of a team of researchers studying how biomechanics can be used to inform the design of new rehabilitation techniques in patients with osteoarthritis and individuals following anterior cruciate ligament rupture. Kate holds a number of research leadership roles including Research and Development Lead for Therapies (Cardiff and Vale University Health Board), Director of Research Governance and Research Theme Lead for optimising health through activities, lifestyle and technology (School of Healthcare Sciences, Cardiff University).

Owain Clarke



Owain Clarke has been BBC Cymru Wales' health correspondent since July 2012. He works on TV, radio and online in both Welsh and English. Owain also contributes to the BBC's UK-wide news programmes. Before becoming health correspondent, Owain spent more than 10 years working in the politics team, as a correspondent at Westminster and reporter in Cardiff Bay. He has also reported on numerous international summits and covered several US election campaigns.

Tony Cope



Tony is originally from Oldham but he's now happily settled in Bangor, North Wales. Tony has a background in Biomedical Science and has a 25+ year career in Commercial Science, including running his own BioTech business. This came to an end when his mental health (Bipolar, Depression, Anxiety and borderline PTSD) overwhelmed him. In the last 2 years, he's discovered Public Involvement & Engagement (PIE). It's reinvigorated him and is a new way to use his professional and lived experience skill sets. Tony has contributed to a number of Health and Care Research Wales initiatives, including a workshop at the 2022 conference. Tony also engages in PIE with a number of other organisations across the UK, including HDR-UK and King's College London. Public involvement has taken Tony across the UK, including Hull University and The House of Lords.

Teresa Davies



Teresa aka Dory is a retired landscape gardener, mother of two and grandmother of three. She was diagnosed 11 years ago with young Alzheimer's which pushed her off a cliff and made her feel like that was the end. She was saved by getting involved with the DEEP network and now feels like she got her life back.

Professor Emeritus Sue Denman



Sue has a career background in the health and education sectors with a focus on public health. She moved to Wales to set up WEFO's Research, Monitoring and Evaluation Unit. She was appointed Director of the Wales Office for Research and Development in Health and Social Care in 2007. Later she joined the staff of the School of Medicine, Cardiff University, to coordinate the strategy of the school, and in that role set up the South East Wales Academic Health Science Partnership. Retirement from full time paid employment has enabled Sue to devote time to volunteering for Cardiff University and her community. She was involved in setting up Solva Care and is a Trustee of the Charity. She is passionate about the role of communities in wellbeing which has led her to co-found Together for Change - a partnership programme which brings the voice of communities to local decision makers.



Dr Martin Elliott



Martin is a Senior Research Fellow in the Children's Social Care Research and Development Centre (CASCADE) at Cardiff University. He is currently the Principal Investigator for an NIHR funded study looking at registration of the residential childcare workforce. Co-investigator on an NIHR funded study exploring mental health crisis services for children and young people up to 25 years in England and Wales and Coordinator for the Health and Care Research Wales funded social care research capacity building programme. His research interests include children 'looked after' by the state; young people in secure accommodation; children on the edge of care; poverty and social inequalities; services and outcomes for disabled children and young people.

Dr Andrew Freedman



Dr Andrew Freedman MA, MD, MB, B Chir, FRCP (Lond. & Edin.) is Reader and Honorary Consultant in Infectious Diseases at Cardiff University and the University Hospital of Wales. He qualified in medicine from Cambridge University and St Thomas' Hospital in 1980 and subsequently trained in Infectious Diseases at St George's Hospital and Harvard Medical School before coming to Cardiff in 1994. His research interests include the haematological effects of HIV infection as well as clinical trials in viral treatments and vaccines. He is past Secretary of the British HIV Association and he sits on the MHRA Infection Expert Advisory Group. He was appointed lead Principal Investigator for COVID-19 vaccine trials in Wales in 2020 and Fellow of the Association of Physicians of UK and Ireland in 2021.

Dr Sarah Fry



Sarah is a Senior Lecturer in healthcare sciences. Her research expertise involve understanding socially derived health knowledge, and particularly the construction of knowledge in communities at high risk of health inequalities. She also has expertise in patient and public involvement in research and advises researchers on how to involve people at the early stages of research design, data collection and dissemination. Sarah is a firm believer that this necessary area of research is often overlooked but is important if scientific findings are to make sustainable difference to everyday lives. Sarah also worked as a nurse in the NHS for 15-years, which she thinks is where her straightforward approach to understanding people comes from.

Dr Selena Harris



Selena is a general practitioner in Clarence Medical Centre, North Wales, Rhyl. She is a GP trainer for the Royal College of General Practitioners and GP tutor for Cardiff and Liverpool students. Clarence Medical Centre is active recruiters in research and passionate about promoting research in primary care. They are currently the hub for Wales for the PANORAMIC trial and have been top recruiters in UK wide trials.

Dr Lilian Hunt



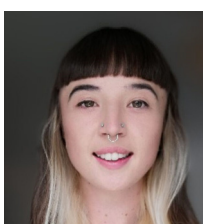
Dr Lilian Hunt is the Equality, Diversity & Inclusion in Science and Health (EDIS) Lead in Wellcome's Culture Equity Diversity and Inclusion (CEDI) team. They received their PhD in Genetics from UCL whilst at The Francis Crick Institute where they helped bring together the founders of EDIS in 2016. Lilian has since developed the coalition, supporting the 29 EDIS members to deliver on their EDI strategies covering inclusive research, culture and careers. Lilian has an active research collaboration reviewing global research funders' policies to include sex, gender, and/or diversity analysis in research content. They champion inclusive research design and practice within Wellcome and EDIS member organisations. They sit as an Advisory Board Member for The George Institute's 'MESSAGE (Medical Science Sex and Gender Equity)' research project, and the SGCI grant 'Strengthening the Capacities of Science Granting Councils (SGCs) in Gender Equality and Inclusivity (GEI)' delivered through the HSRC South Africa.

Sana Illsley



Sana works as a Family Group conference support worker for Barnardo's in Wales. She is a birth parent with lived experience, who advocates for family preservation and adoption reform. Sana is also a founding member of PAN in Wales, became the first birth parent in the UK to train prospective adoptive parents alongside reuniting families and input into Social Workers ongoing training post degree via the CPEL course in Wales. At CASCADE Sana is a founding member of the Public Involvement Parents group. She gives advice and feedback to researchers on work relating to families and social services.

Rachel Kelway-Lewis



Rachel's academic background has been centred around sustainable development and sociolegal research. She studied Law at undergraduate level before completing a master's in Environmental Law and Sustainable Development. During which, she specialised in sustainable communities and Welsh housing policy, specifically the One Planet Development policy. Whilst Rachel's previous work was focused around rural housing solutions, she is currently looking more broadly at the determinants of community wellbeing and climate emergency. Rachel is particularly interested in community engagement, sustainable development and policy that supports grass roots, community action specifically within lower income communities and was awarded a Diploma in Clinical Trials from LSHTM in 2017.



Dr Ashra Khanom



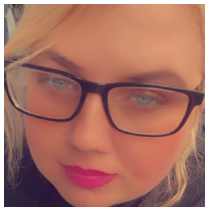
Dr Khanom is a Senior Research Fellow in Health Services Research at Swansea University, Faculty of Medicine, Health and Life Sciences, Patient and Public Involvement (PPI) Lead for PRIME Centre Wales, a research centre focusing on primary and emergency care and Research Development Advisor for Health and Care Research Wales (HCRW). Ashra's main interests are in prevention and early intervention addressing health inequities and unequal access to health care use using linked health data, novel PPI and engagement, and collaboration with the NHS, Third sector organisations and international partners. She is co-leading on an NIHR, HS&DR awarded BE SURE study exploring disparities in injury presentation to emergency services between ethnic minorities and white British people. Is academic lead on the HCRW RfPPB award, CYMELL diabetes study piloting a community-based intervention to increase the uptake of follow-up checks and leads on the Cold Hands, Warm Heart project on sustainable heat mats in refugee camps.

Francesca Lewis



Francesca has dedicated 18 years of her career to the field of Therapy Radiography, with a specialisation as a pre-treatment radiographer spanning 16 of those years. She is passionate about the quality of the service they provide for patients and the impact of culture on the way they work. Over the last 2 years, Francesca has expanded her role, taking on the responsibility of being the cannulation lead for radiotherapy at Velindre. Additionally, she's been seconded to a pivotal digital project where she serves as the Radiotherapy representative and service champion. In this capacity, Francesca plays a crucial role in guiding the implementation of WCP and WPAS systems, which are replacing the longstanding CANISC system utilised in the department for 15 years.

Jennifer Molloy



Jen is a proud mum and an experienced volunteer. She has used her lived experience extensively over many years contributing to campaigns and research about the rights of young people in care and those of parents and families. At CASCADE Jen is a founding member of the Public involvement parents group. She gives advice and feedback to researchers on work relating to families and social services. Jen is also a member of CASCADE Involvement board, the strategic governance board of public contributors at CASCADE. Here she helps steer and gives oversight to both CASCADE's involvement work but also centre wide strategy.

Professor Graham Moore



Professor Graham Moore is a professor in the School of Social Sciences, with roles across a range of research investments and infrastructures, including the Centre for Development Evaluation Complexity and Implementation in Public Health Improvement (DECIPHer) funded by Health and Care Research Wales, the Wolfson Centre for Young People's Mental Health and a UKPRP funded consortium focused on commercial determinants of health and health inequalities (Shaping Public Health policies To Reduce Inequalities and HarM; SPECTRUM). Graham's substantive research interests are in health inequalities, primarily focused on childhood and adolescence. This includes a focus on equity impacts of universal interventions, and on interventions which aim to reduce inequality by targeting population subgroups (eg children from poorer backgrounds, children exposed to domestic violence, children experiencing local authority care, or neurodiverse children and young people). Alongside a range of work focused on child and adolescent mental health, as a major contributor to the inter-generational reproduction of inequality, he also has a strong track record in research on young people's tobacco use and tobacco policy.

Dr Rob Orford



Dr Rob Orford is the Chief Scientific Adviser for Health (CSA-H). He is the professional lead for healthcare scientists in NHS Wales. He provides specialist technical and scientific health advice across a range of health sciences and health protection areas. He is a member of the National Diagnostics Board, UK Genome and UK Life Science Advisory Board. During the Pandemic he led the Welsh Government scientific and technical response, establishing and co-chairing Technical Advisory Group and was an active member of SAGE. Dr Orford is the Senior Responsible Officer for the Welsh Wastewater Programme and leads the Science Evidence Advice Division in Welsh Government. Previously working for Public Health England in rapid risk assessment for emerging health threats at a national and international level. By background Dr Orford is laboratory scientist working as post-doctoral research fellow in developmental biology and molecular oncology.



Professor Scott Orford



Scott Orford is a Professor of GIS and quantitative human geography in the School of Geography and Planning, Cardiff University, a Co-director of the Wales Institute of Social and Economic Research and Data (WISERD), and academic lead of the Welsh Government and Carnegie UK Trust funded Understanding Welsh Places website and research project. He has research interests in the geographic analysis and modelling of socio-economic processes and has worked on projects in a variety of social science areas such as health, demographic and population studies, housing and housing markets, accessibility to services and community assets, and mapping variations in social inequalities. He is currently researching innovation in open data presentation using interactive and collaborative dashboards and websites with an emphasis on Welsh data.

Dr Sarah Rees



Dr Sarah Rees is the Public Involvement Lead at the National Centre for Mental Health, supporting both research programmes and individual research projects. She provides advice, guidance and support to internal and external researchers on public involvement activities with people with lived experience of mental health conditions, and their families and loved ones. Dr Sarah Rees coordinates a number of the centre's established public advisory groups, including the YAG (Young People's Advisory Group), PÂR lived experience group, and Post-traumatic Stress Disorder (PTSD) Public Advisory group.

Dr Roiyah Saltus



Dr Roiyah Saltus is a sociologist and her research incorporates critical race theory, feminism, community development theory and critical perspectives in health, social policy and practice. Her abiding research interest is rooted in intersectionality, in particular, the interplay and impact of, gender, age and social class as experienced by racialised and minority ethnic population groups.

Fay Scott



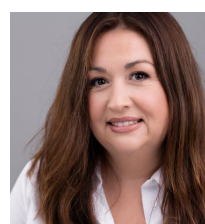
Fay is a Senior Public Involvement Manager in the NIHR's Coordinating Centre, leading innovation projects, primarily focused on diversity and inclusion to improve the quality and impact of public involvement in research. This includes providing strategic advice and guidance on how to best engage diverse communities. Fay is also the NIHR Race Equality Public Action Group (REPAG) Founding member and co-chair and; Lead co-creator of the NIHR Race Equality Framework for Public Involvement in Research. Fay has over 15 years experience leading a diverse portfolio of programmes and projects in a wide range of organisations, including the NHS, further education, government, commissions and regulatory bodies. Fay was also a Co-founder of an advocacy organisation supporting people with complex needs, as well as case management.

Dr Simone Sebastiani



Dr Simone Sebastiani graduated in Italy where he did most of his training. He completed his training with a six months experience in Belgium and then moved to the UK. After a fellowship in laparoscopic colorectal surgery he has been appointed as Consultant in Bronglais General Hospital.

Rhian Thomas-Turner



Rhian Thomas-Turner is the Research and Development Lead for the Children's Hospital of Wales and Operational Lead for the Children and Young Adults' Research Unit, Wales' only clinical research space for children under 18. Rhian has been involved in Paediatric Research since 2012 when she was Network Manager for the Children and Young Person's Research Network, with a background in law and research governance and is currently undertaking a PhD at the Hilary Rodham Clinton School of Law on Children's Rights and Clinical Research. Rhian is also completed a part-time secondment with Aparito, a health technology company specialising in remote clinical trials for the paediatric and rare diseases communities.



Rachael Vaughan



Rachael Vaughan is the Engagement Manager for Children, young people, parents and carers at the Children's Social Care Research and Development centre (CASCADE). Rachael leads a team that provides advice, guidance, and support to meaningfully involve children, young people, parents and carers with lived experience of children social care across the Centre's research portfolio. CASCADE's core involvement groups are the strategic Involvement Board and the established research advisory groups, CASCADE Voices and CASCADE Parents Research Advisory group. Rachael also works across a range of CASCADE research projects supporting their involvement activities.

Rebekah Vincent-Newson



Reb is part of the Research, Data and Innovation Team at Social Care Wales. As Research and Evidence Manager her role is to find ways to support people working across social care to use research and evidence in planning, practice and policymaking. Before joining Social Care Wales, Reb spent 20 years working in integrated health and social care teams as a mental health social worker, Approved Mental Health Professional and manager. She supported people using mental health services and staff with their development, wellbeing and with complex decision-making.

Professor Kieran Walshe



Kieran Walshe is Director of Health and Care Research Wales and Professor of Health Policy and Management at Alliance Manchester Business School. He is also a non-executive director of the Christie NHS Foundation Trust, chair of the board of the UK Health Services Research UK and a member of the US Academy Health International Advisory Board. He was a member of the REF2014 panel for public health, health services research and primary care. He was associate director of the National Institute for Health and Care Research (NIHR) health services and delivery research programme from 2012 to 2015, and directed the NIHR service delivery and organisation research programme from 2008 to 2011. He edited the journal Health Services Management Research from 2011 to 2015 and was a board member and scientific committee chair of the European Health Management Association from 2008 to 2015. From 2003 to 2006 he directed the Centre for Public Policy and Management in Manchester Business School, and from 2009 to 2011 he directed the university's Institute of Health Sciences.

Dr Denitza Williams



Dr Williams is a Lecturer at the School of Medicine in Cardiff University. She has established expertise in health services research and qualitative research methods with a focus on shared decision-making in women's health. She has led a number of mixed-methods projects including needs assessment, development and evaluation of shared decision-making interventions in women's health including: chronic kidney disease, autoimmune rheumatic disease, cystic fibrosis and cervical screening. She works in close collaboration with national and international organisations including Public Health Wales, Public Health England, Welsh Government and the Organisation for Economic Co-operation and Development (OECD). She has won the Audrey Jones Award for Scholarship focusing on her work in cervical screening in Wales and has been nominated as a Rising Star in the Chwarae Teg Womenspire Awards (2019).

Dr Alan Woodall



Dr Alan Woodall is a clinician scientist leading on research to improve the physical health outcomes for people with serious mental illness. His main interests are around cardiovascular and cancer risk reduction, polypharmacy and medicines optimisation using artificial intelligence, especially around antipsychotic use.

Professor Michael Woods



Michael Woods is Co-Director of the Centre for Welsh Politics and Society at Aberystwyth University and Co-Director of the Wales Institute of Social and Economic Research and Data (WISERD). He has over 25 years experience of research on rural communities in Wales and internationally, including work on rural community governance, participation and wellbeing. He collaborated with the Welsh Local Government Association to co-produce a Rural Vision for Wales in 2021 and has undertaken research for the Welsh Government on rural development and on town and community councils, including as Co-Director of the Wales Rural Observatory (2003-13). Until recently he was a member of the Steering Group for the Centre for Excellence in Rural Health Research at Aberystwyth University.