

Payment for helping health and social care research

A guide for members of the
public who want to help with
research



**Easy
Read**

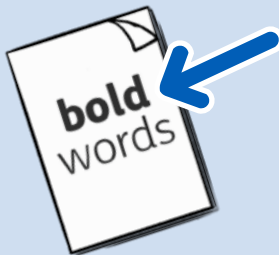
Easy Read



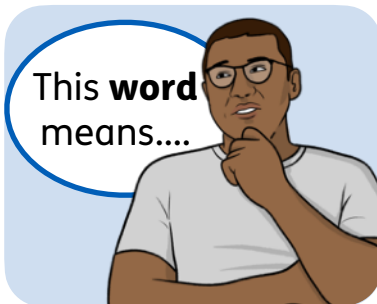
This is an Easy Read version of some information. It may not include all of the information but it will tell you about the important parts.



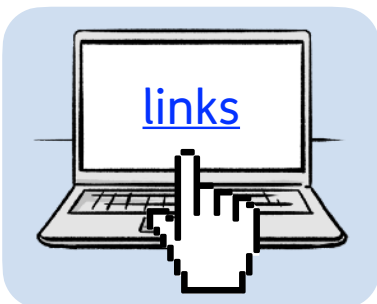
This Easy Read booklet uses easier words and pictures. Some people may still want help to read it.



Some words are in **bold** - this means the writing is thicker and darker. These are important words in the booklet.



Sometimes if a bold word is hard to understand, we will explain what it means.



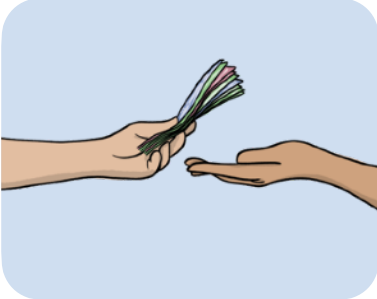
Blue and underlined words show links to websites and email addresses. You can click on these links on a computer.

What is in this booklet

Being offered payment.....4

Your job status.....8

Being offered payment



People should be offered payment for helping health and social care research.



If you help with research, you may be offered payment in cash or **bank transfer**.

Bank transfer is where the money is paid into your bank account.

Voucher

Some organisations may give you vouchers or gifts for your help.

Tax

You may need to pay **tax** on the money you receive.

Tax is money you have to pay to the government.



Whether you need to pay tax depends on how much money you get from other places.



You are in charge of making sure you pay the right amount of tax.

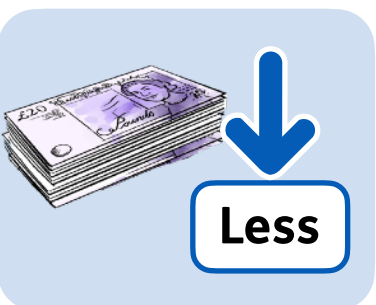


The money you receive from helping with research may affect your **benefits**.

Benefits is money the government gives to some people to help pay for the things they need to live.



You need to find out how your benefits might be affected before agreeing to help researchers.



If you get benefits you can ask to be paid less money for helping with research.



If you get benefits you can also ask not to get paid at all.



[This website](#) has more information about how this money could affect your benefits.



If you have to pay money to help with research, like paying to travel, this is called **expenses**.

Expenses are money you have paid out to come to a meeting or any other activity related to helping research.

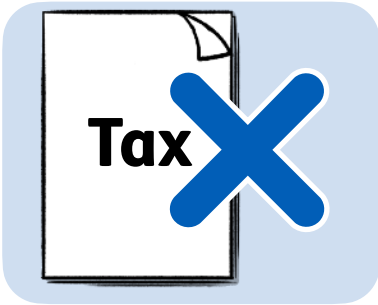


If you spend money on expenses you must keep the receipt.



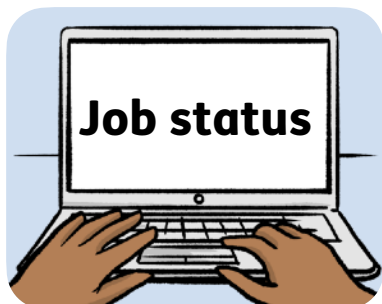
You can help with research if you are **self-employed**.

Self-employed means you work for yourself, not a company.



When you are self-employed, if you earn up to or less than £1,000 in one year in total, including helping with research, you do not need to pay tax.

Your job status



Sometimes before helping with research, you may need to find out your job status .



This is so we can work out how to pay you for your time.



If you help with paid health research, this usually does not mean that you have a job with the research project.

If you need help finding your job status you can go to these websites:



- www.citizensadvice.org.uk/work/basic-rights-and-contracts/check-your-employment-status/



- www.nidirect.gov.uk/articles/employment-status



If you are not sure about your job status then please talk to the organisation doing the health research about it.

These activities do not usually count as a job:



- Going to meetings and events, like drop-in sessions and open days.



- Reading documents, like application forms and information sheets.



- Activities and projects that take place over a short amount of time.



Helping with research that keeps going for a long time like taking part in groups or **committees** is not a job.



A **committee** is a group of people which makes decisions for an organisation.

This Easy Read booklet was produced by easy-read-online.co.uk
The booklet includes images licensed from Photosymbols & Shutterstock.