

CLIMATE INEQUALITIES: DON'T GET LEFT BEHIND?

Dr Sara MacBride-Stewart

Cardiff University





COP24 SPECIAL REPORT

HEALTH & CLIMATE CHANGE



The imperative of climate action to protect human health in Europe



EASAC policy report 38

June 2019

ISBN: 978-3-8047-4011-2

This report can be found at www.easac.eu

Science Advice for the Benefit of Europe



ZERO REGRETS

Scaling up action on climate change mitigation and adaptation for health in the WHO European Region
Second edition

Key messages from the Working Group on Health and Climate Change



Climate Change and Health in Wales:
Views from the public



Sara Wood, Karen Hughes, Rebecca Hill, Natasha Judd, Mark A. Bellis

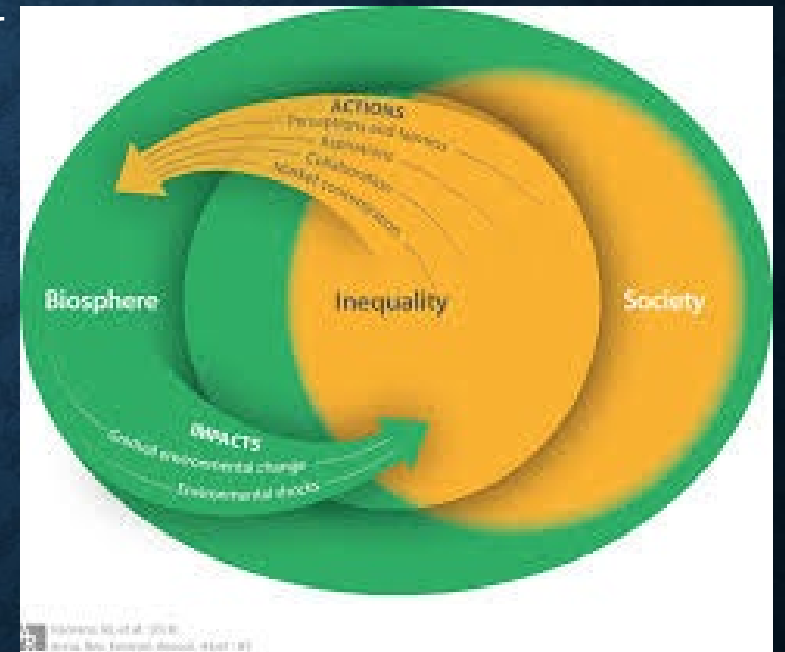
CLIMATE CHANGE AND HEALTH

Existing health challenges and inequalities will increase in the absence of climate change mitigation (EASAC, 2019)

avoidable differences in health outcomes between groups or populations – such as differences in how long we live, or the care that we are given - based on the uneven distribution of exposure, vulnerability or ability to adapt to climate change

(adapted from the Kings Fund 2024)

- socio-economic factors (e.g. income);
- geography (e.g. region, place);
- specific characteristics (e.g. ethnicity or sexuality);
- socially excluded groups (e.g. people seeking asylum or experiencing homelessness)



REDISTRIBUTION AND RECOGNITION

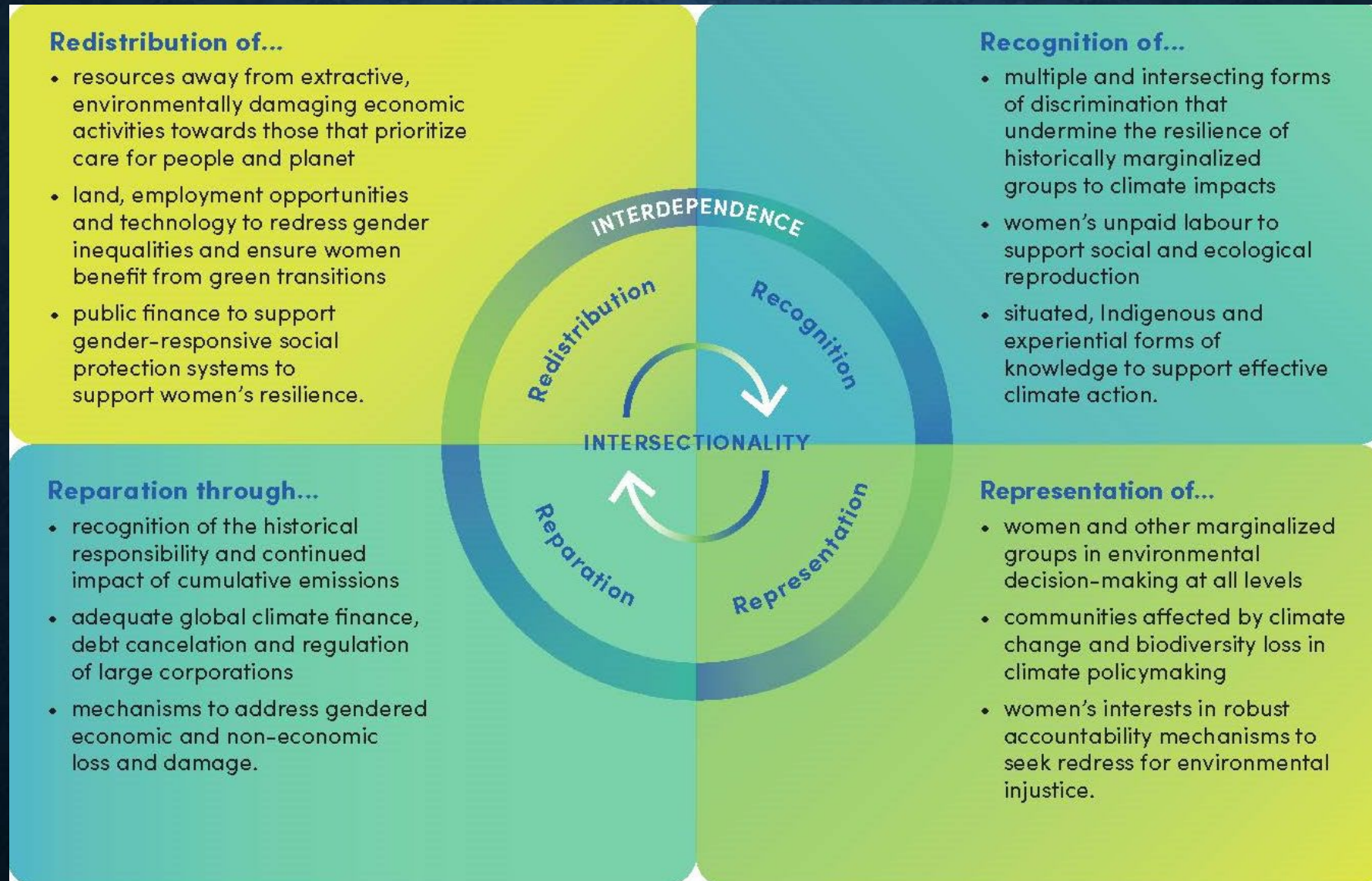


Fig: Principles of Feminist Climate Justice Oxfam COP28 2023, Wang & Lo 2021

AN EQUAL AND JUST TRANSITION TO
TO NET ZERO



SUMMARY REPORT OF THE MAINSTREAMING EQUALITY AND
JUST TRANSITION EVIDENCE PANEL

Authored by: Dr Alison Parken, Dr Sara MacBride-Stewart,
Professor Rachel Ashworth and Dr Rachel Minto

Update 7th December 2023

*You've got **protected characteristics on one side and socioeconomic inequalities on the other.** And we absolutely need to bring those two together*

*How [is Net Zero] addressing the **potential for inequalities get worse** and how to mitigate them [and] how are they **maximising any opportunities to improve the lives of people from protected groups***

HOPEFUL FRAMEWORK FOR A FUTURE EQUALITIES



Re-orientate



Structural novelty



New interfaces



1. RE-ORIENTATE

Most of the **jobs** of today won't exist in the **future**. ..

...considering...the future.. **creativity, resilience**, these features will be **desirable**....So how are we going to enable people to **feel creative, innovative, resilient**?

2. STRUCTURAL NOVELTY

There's need, for example, to **tackle the culture and infrastructure of the industry**. I mean, some of the plants we've listed in Italy and elsewhere, there's no changing facilities for women that are part of the production process [WS3]

it's recognising that **care is a sector that is inevitably going to have to grow** and, and that **it can grow in a way that is more green** [WS6]

3. NEW INTERFACES

Is green skills for all not just green jobs for some. **We want green jobs or we want green skills for all** [WS4]

A **National climate service** ... **directly employ** the builders of wind, solar, wave and tide. **We create** our renewable sector. **We retrofit and insulate** the buildings, **we install** the heat pumps... by doing that ...**we're also addressing fuel poverty**. If we were to do this, it would **kick start the whole training system** [WS4]

PROVOCATIONS FOR HEALTH AND SOCIAL CARE

**WHAT IS NEEDED TO TURN 'DON'T GET
LEFT BEHIND' INTO HOPEFUL HEALTH
AND CARE GOVERNANCE FOR THE
FUTURE?**

DIOLCH

Sara MacBride-Stewart, macbride-stewartS@cardiff.ac.uk