



Centre for Adult Social Care Research
Canolfan Ymchwil Gofal Cymdeithasol i Oedolion



@CAREResearch_W

www.careresearchwales.org



Ymchwil Iechyd
a Gofal **Cymru**
Health and Care
Research **Wales**



Ariennir gan
Lywodraeth Cymru
Funded by
Welsh Government

Centre for Adult Social Care Research

Funded by Health and Care Research Wales (2023 to 2028).

Collaboration with **Centre for Trials Research** and working in partnership with **CASCADE** and **EXCHANGE WALES**.

Working closely with **Social Care Wales**.

Located in sbacr/ Spark; hosted by the School of Social Sciences.

Brings together adult social care research from across Cardiff University, providing:

- a critical mass of research staff working on allied topics,
- strong connections with the social care sector and other social care academics, and
- enhanced support for involving people with lived experience in social care research.



CARE vision and mission

Vision:

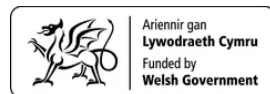
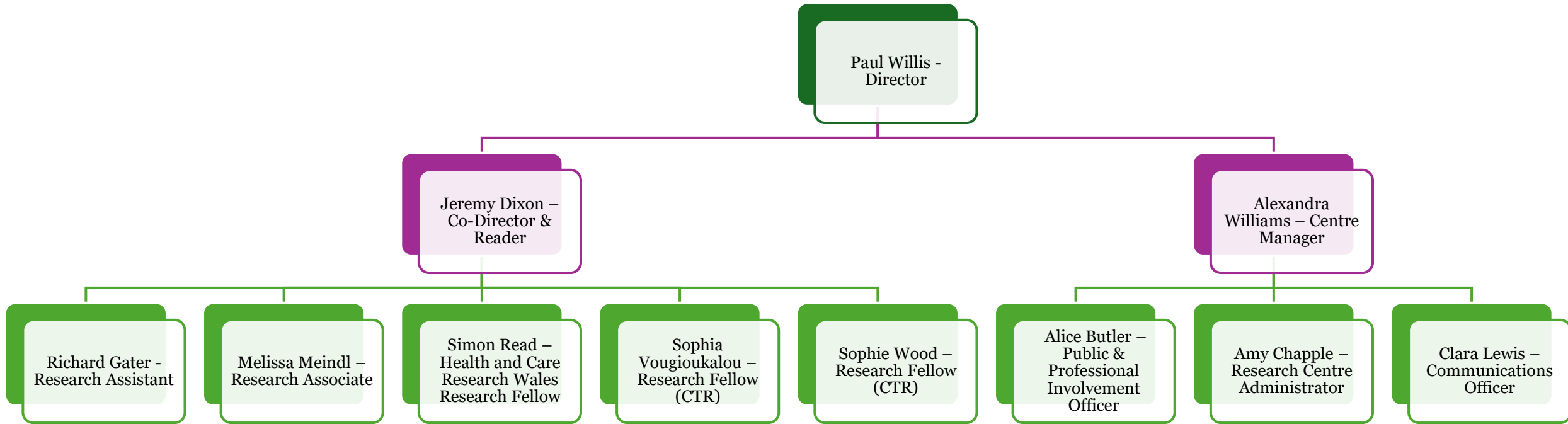
To be a leading research centre in adult social care that envisions a society where every individual with care and support needs receives person-led, dignified, compassionate and high-quality social care, promoting well-being and inclusion of adults of all backgrounds.

Mission statement:

CARE will generate high quality evidence about social care for adults, rooted in the experience of people who receive care and support and those who provide care, and based on the most rigorous research approaches suitable for the questions being addressed. **Our mission is to advance knowledge and understanding in the field of adult social care through multidisciplinary research and collaboration.**



Who we are



Key thematic areas

- Dementia and other long-term neurological conditions
- Learning disability, neurodiversity and learning difficulties
- Housing and long-term care settings for older people
- Transitions to adulthood and adult social care services
- Workforce management and care provision
- Mental health and social care

Other areas we are developing:

- Technology, social care and wellbeing



Recent successful bids

To date, 10 have been awarded (4 CARE led, 6 supported) with a total value of £2.7M.

Some highlights:

- ❑ Food Glorious Food: A mixed methods evaluation of food-related practices in post-diagnostic community-based group support for people affected by dementia (NIHR Social Care programme) – Becky Oatley
- ❑ Evaluating staff training and the implementation of the Mental Capacity Act in care homes for older adults (ENACT Study) (NIHR HS&RD) – Victoria Shepherd
- ❑ Wales Innovation Network: Small Grant Funding – two grants: 1) dementia and assistive technology amongst minority groups of older people; 2) Autistic spaces of welfare



Emerging topics of interest

- Homecare provision, inclusion and safety

Inclusive provision for older LGBTQ+ people

Understanding safety, risks and harm-benefit balances arising from home-based care - led by Prof Carson-Stevens in Medicine.

- Linked datasets and big data analysis

Social Care Linked Data Lab – collaboration with SAIL (Swansea Uni) and LSE

- Assistive technologies and social care provision

Assistive technologies for people with dementia from marginal and minoritised groups

The role of Smart Home Technologies supporting independent living for disabled individuals with physical, sensory and/or cognitive impairments (age 18-65) in Wales



Priorities and plans for CARE

- ❑ Enhancing user involvement across all research bid development and Centre activity – Lived Experience Collective
- ❑ Strengthening practitioner contributions to research plans and activities - Practice Advisory Forum
- ❑ Developing new national/ UK and international collaborations
- ❑ Boosting dissemination of adult social care research to the Welsh sector – new collaboration with ExChange Wales.
- ❑ Investing in the futures of new/ early career researchers in adult social care





October 2024

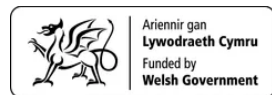
This conference series aims to focus on learning disability, highlighting research and innovative work being undertaken in this field. The title ‘Being Seen, Heard and Valued’ was chosen to recognise and illuminate the developments in this area, especially the important work being undertaken both with and by those with learning disabilities. The conference series spans children and adults and hopes to reflect joy in this work, and celebrate achievements.

Title	Speaker
Babies in care proceedings – what do we know about parents with learning disabilities	Katy Burch, Oxford Brookes University
Ageing with learning disabilities: an invisible affair	Sara Ryan, Manchester Metropolitan Univeristy
‘What about me?’ People with learning disabilities living on the edges of support: what is it like, and what needs to change?	Dr Edmund Coleman-Fountain, University of York
The voice of young people with learning disabilities and autism in supported employment: Engage to Change and building partnerships to promote what works	Andrea Meek, Dr. Elisa Vinga National Centre for Mental Health & Gerraint Jones- Griffiths, Learning Disability Wales

To sign up and view the full conference programme please visit: <https://www.exchangewales.org/being-seen-heard-and-valued/>

What are the grand challenges for social care AND social care research?

- Social care workforce churn and change – how do we build and maintain strong collaborations?
- Limited evidence about ‘what works’ in adult social care practice and service provision
- Role of Artificial Intelligence for enhancing social work and social care practice in ethically-informed ways
- Status of the social care sector – wider undervaluing of the workforce; unpaid carers; and, people receiving care and support services.
- Achieving better engagement of underrepresented and marginalised groups – priority area for both social care and researchers.



Diolch am wrando!
Thank you for listening!

Follow us:
www.careresearchwales.org

