The image features four potted plants in the foreground. From left to right: a small cactus in a silver metal pot, a larger cactus in a white ceramic pot, an agave plant in a white ceramic pot, and a succulent in a silver metal pot. The background is a plain, light-colored wall.

# Being Research Ready

## Developing a Specialised Vaccine Team

Maryanne Bray & Grace Hopkins  
Early Phase Team Lead & Vaccine Team Lead



# Cardiff and Vale Vaccine Delivery Team



Cardiff and Vale Research Delivery Team  
Tim Cyflawni Ymchwil Caerdydd a'r Fro





# Background

## Lord O'Shaughnessy Report – May 2023

- How can commercial clinical trials unlock health, growth and investment in the UK
- 27 recommendations made

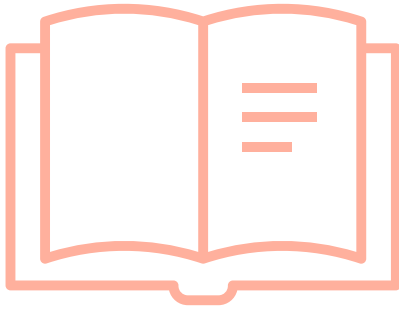
## HCRW Research Matters 2022-2025

- 60,000 people in Wales took part in COVID 19 research
- One Wales communication strategy

## NIHR – Vaccine Innovation Programme

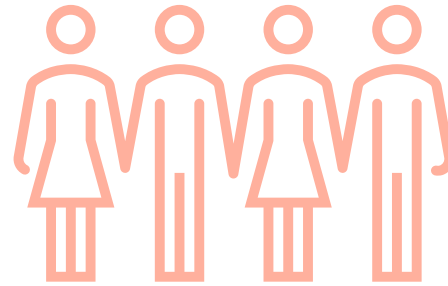
- Early advice on vaccine pipeline
- Research ready sites
- Vaccine study site identification
- Recruit participants into vaccine trials
- Cross cutting areas of focus for continual improvement

# Research and Delivery - CAVUHB



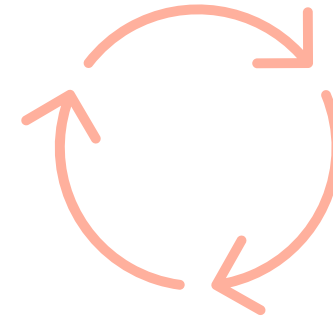
## Commercial & Non-Commercial

30% commercial output across  
Wales  
30% non commercial output  
Across wales



## Staffing

Early & Late phase studies along with  
specialist research teams across the  
UHB including peadiatrics



## Timeframes

Study set up for pandemic and  
infection diseases  
Recovery trial - 10 days  
Comflucov - 4 days

# Problem Areas

## Capacity

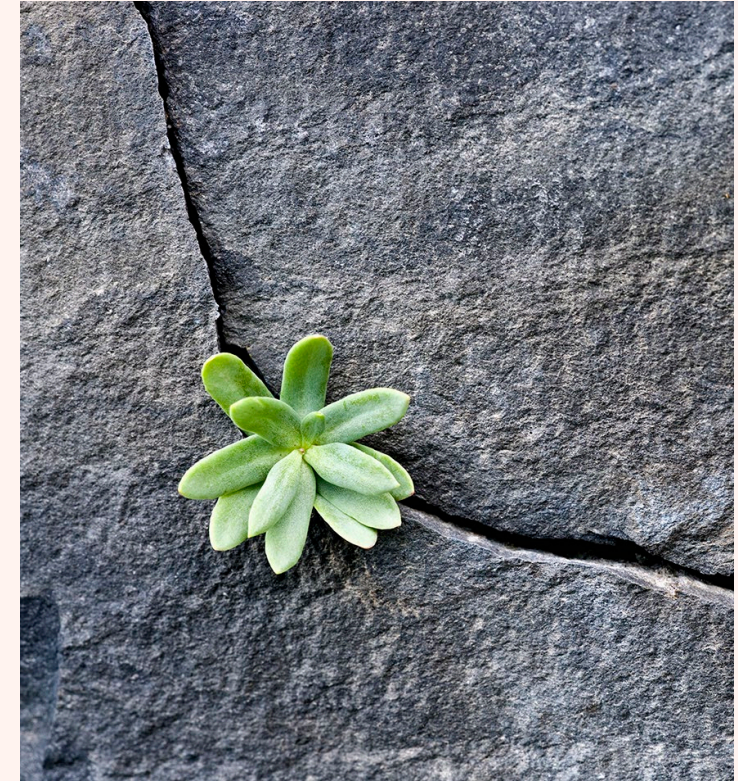
Undertaking vaccine trials sometimes at the expense of other specialities and research teams in order to deliver targets and recruitment

## Pipeline

Lack of knowledge of the vaccine pipeline to prepare for Expression of interest and Site Selection

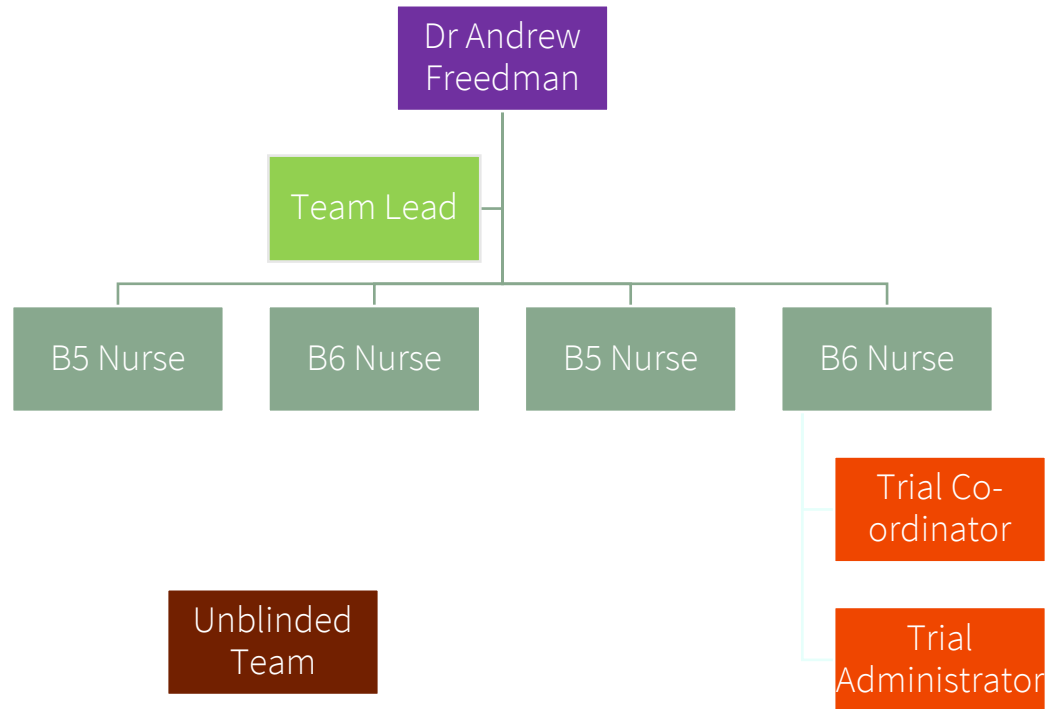
## Competence

Lack of competence across research delivery in vaccine administration





# Vaccine Delivery Team



# Research Readiness

## Competence

- Research delivery staff vaccine trained
- Ongoing training programme

## Collaboration

- Senior Vaccine Lead for UHB supported training and competence sign off.
- HCRW booking team
- Whole Research Delivery approach - unblinded/blinded rotas

## All Wales

- All Wales Vaccine meeting
- Pipeline discussions/networking
- One Wales approach
- Troubleshooting

## Local

- Monthly operational meetings led by Dr Freedman
- Identification of pipeline, performance
- Patient pathway developed



# Vaccine studies to date....

Johnson&Johnson

moderna



Hwb Ymchwil Canser Caerdydd  
Cardiff Cancer **Research Hub**



BIONTECH







# Looking Forward

- Continuous Professional Development
- Build the portfolio to include non seasonal vaccine studies
- Present our journey via abstracts, posters and conferences
- Be at the forefront of vaccine trial delivery in Wales





"Clinical research is not just a scientific endeavour; it is a beacon of hope for patients and a testament to our commitment to advancing healthcare for all."

Thank you

Maryanne Bray

Team Lead Clinical Research Facility

Maryanne.bray3@wales.nhs.uk